
Product Datasheet

Fascin Antibody (orb749791)

Description

Fascin organizes filamentous actin into bundles with a


Species/Host

Mouse

Reactivity

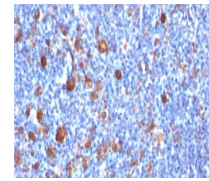
Human

Conjugation

Unconjugated

Tested Applications

FACS, IF, IHC-P, WB



IHC analysis of formalin-fixed, paraffin...

Immunogen

Full length recombinant human protein was used as the immunogen for the Fascin antibody.

Preservatives

0.2 mg/ml in 1X PBS with 0.1 mg/ml rAlbumin (US sourced) and 0.05% sodium azide

Storage

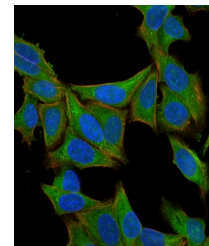
Store the Fascin antibody at 2-8°C (with azide) or aliquot and store at -20°C or colder (without azide).

Note

For research use only

Application notes

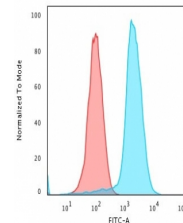
Optimal dilution of the Fascin antibody should be determined by the researcher.1. Staining of formalin-fixed tissues requires boiling tissue sections in pH 9 10mM Tris with 1mM EDTA for 10-20 min followed by cooling at RT for 20 min.2. The prediluted format is supplied in a dropper bottle and is optimized for use in IHC. After epitope retrieval step (if required), drip mAb solution onto the tissue section and incubate at RT for 30 min.



Immunofluorescent staining of permeabili...

Formula

0.2 mg/ml in 1X PBS with 0.1 mg/ml BSA (US sourced) and 0.05% sodium azide



Flow cytometry testing of PFA-fixed huma...

Isotype

Mouse IgG2a, kappa

Clonality

Monoclonal

Purity

Protein G affinity chromatography

Uniprot ID

Q16658

Hazard Information

This Fascin antibody is available for research use only.

Dilution Range

Western blot: 1-2ug/ml,Flow cytometry: 1-2ug/million cells,Immunofluorescence: 1-2ug/ml,Immunohistochemistry (FFPE): 1-2ug/ml for 30 min at RT

Expiration Date

12 months from date of receipt.