
Product Datasheet

PMEL17 / Melanoma gp100 Antibody (orb749784)

Description

Cytotoxic T lymphocytes (CTL's) recognize melanoma-


Species/Host

Mouse

Reactivity

Human

Conjugation

Unconjugated

Tested Applications

IHC-P, WB

Immunogen

Recombinant human protein was used as the immunogen for the PMEL17 antibody.

Preservatives

0.2 mg/ml in 1X PBS with 0.1 mg/ml rAlbumin (US sourced) and 0.05% sodium azide

Storage

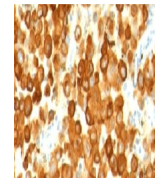
Store the PMEL17 antibody at 2-8°C (with azide) or aliquot and store at -20°C or colder (without azide).

Note

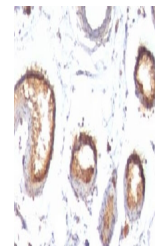
For research use only

Application notes

Optimal dilution of the PMEL17 antibody should be determined by the researcher.1. Staining of formalin-fixed tissues requires boiling tissue sections in pH 9 10mM Tris with 1mM EDTA for 10-20 min followed by cooling at RT for 20 min.2. The prediluted format is supplied in a dropper bottle and is optimized for use in IHC. After epitope retrieval step (if required), drip mAb solution onto the tissue section and incubate at RT for 30 min.



IHC:
Formalin-fixed,
paraffin-embedded
h...



IHC:
Formalin-fixed,
paraffin-embedded
h...

Formula

0.2 mg/ml in 1X PBS with 0.1 mg/ml BSA (US sourced) and 0.05% sodium azide

Isotype

Mouse IgG1, kappa

Clonality

Monoclonal

Purity

Protein G affinity chromatography

Uniprot ID

P40967

Hazard Information

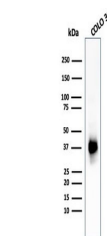
This PMEL17 antibody is available for research use only.

Dilution Range

Western blot: 1-2ug/ml, Immunohistochemistry (FFPE): 1-2ug/ml for 30 min at RT (1) (2)

Expiration Date

12 months from date of receipt.



Western blot testing of human COLO-38 ce...