

---

## Product Datasheet

**Alpha Actin Antibody Cocktail / ACTA2 (smooth muscle) (orb749772)**

**Description**

Actin is a major component of the cytoskeleton and

**Species/Host**

Mouse

**Reactivity**

Human, Rat

**Conjugation**

Unconjugated

**Tested Applications**

IF, IHC-P

**Immunogen**

An N-terminal decapeptide of the alpha smooth muscle isoform of Actin (1A4) and recombinant full-length human protein (ACTA2/791) were used as the immunogen for the ACTA2 antibody cocktail.

**Preservatives**

0.2 mg/ml in 1X PBS with 0.1 mg/ml rAlbumin (US sourced) and 0.05% sodium azide

**Storage**

Store the ACTA2 antibody cocktail at 2-8°C (with azide) or aliquot and store at -20°C or colder (without azide).

**Note**

For research use only

**Application notes**

Optimal dilution of the ACTA2 antibody cocktail should be determined by the researcher.1. Staining of formalin-fixed tissues requires boiling tissue sections in pH 9 10mM Tris with 1mM EDTA for 10-20 min followed by cooling at RT for 20 min.2. The prediluted format is supplied in a dropper bottle and is optimized for use in IHC. After epitope retrieval step (if required), drip mAb solution onto the tissue section and incubate at RT for 30 min.

**Formula**

0.2 mg/ml in 1X PBS with 0.1 mg/ml BSA (US sourced) and 0.05% sodium azide

**Isotype**

Mouse IgG2a, kappa

**Clonality**

Monoclonal

**Purity**

Protein G affinity chromatography

**Uniprot ID**

**P62736**

**Hazard Information**

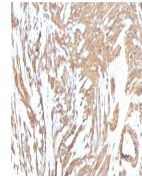
This ACTA2 antibody cocktail is available for research use only.

**Dilution Range**

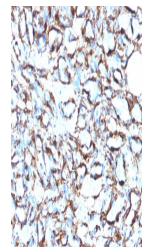
Immunofluorescence: 1-2ug/ml, Immunohistochemistry (FFPE): 0.25-0.5ug/ml for 30 min at RT

**Expiration Date**

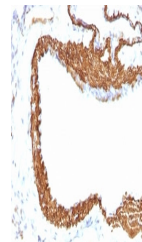
12 months from date of receipt.



IHC:  
Formalin-fixed,  
paraffin-embedded  
h...



IHC:  
Formalin-fixed,  
paraffin-embedded  
h...



IHC:  
Formalin-fixed,  
paraffin-embedded  
r...