

Product Datasheet

Parathyroid Hormone Antibody / N Terminal (orb749758)

Description

Epitope of this mAb maps in the N-terminus of PTH,



...

Species/Host

Mouse

Reactivity

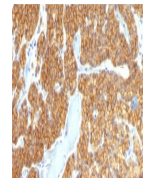
Human

Conjugation

Unconjugated

Tested Applications

IHC-P



IHC:
Formalin-fixed,
paraffin-embedded
h...

Immunogen

A synthetic peptide corresponding to amino acids 1-34 of human PTH was used as the immunogen for the Parathyroid Hormone antibody.

Preservatives

0.2 mg/ml in 1X PBS with 0.1 mg/ml rAlbumin (US sourced) and 0.05% sodium azide

Storage

Store the Parathyroid Hormone antibody at 2-8°C (with azide) or aliquot and store at -20°C or colder (without azide).

Note

For research use only

Application notes

Optimal dilution of the Parathyroid Hormone antibody should be determined by the researcher.1. Staining of formalin-fixed tissues requires boiling tissue sections in 10mM Citrate buffer, pH 6.0, for 10-20 min followed by cooling at RT for 20 min.2. The prediluted format is supplied in a dropper bottle and is optimized for use in IHC. After epitope retrieval step (if required), drip mAb solution onto the tissue section and incubate at RT for 30 min.

Formula

0.2 mg/ml in 1X PBS with 0.1 mg/ml BSA (US sourced) and 0.05% sodium azide

Isotype

Mouse IgG2b, kappa

Clonality

Monoclonal

Purity

Protein G affinity chromatography

Uniprot ID

P01270

Hazard Information

This Parathyroid Hormone antibody is available for research use only.

Dilution Range

Immunohistochemistry (FFPE): 0.5-1ug/ml for 30 min at RT

Expiration Date

12 months from date of receipt.