

---

## Product Datasheet

### Beta-2 Microglobulin Antibody (orb749752)

**Description**

Beta-2 microglobulin is a 12KDa protein with a pI of 5.6.


**Species/Host**

Mouse

**Reactivity**

Human

**Conjugation**

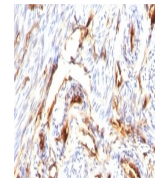
Unconjugated

**Tested Applications**

FACS, IF, IHC-P, WB

**Immunogen**

Full length recombinant human B2M protein was used as the immunogen for the Beta-2 Microglobulin antibody.



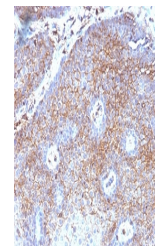
IHC:  
Formalin-fixed,  
paraffin-embedded  
h...

**Preservatives**

0.2 mg/ml in 1X PBS with 0.1 mg/ml rAlbumin (US sourced) and 0.05% sodium azide

**Storage**

Store the Beta-2 Microglobulin antibody at 2-8°C (with azide) or aliquot and store at -20°C or colder (without azide).


**Note**

For research use only

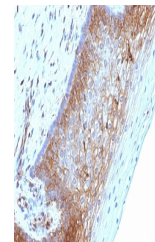
**Application notes**

Optimal dilution of the Beta-2 Microglobulin antibody should be determined by the researcher.1. Staining of formalin/paraffin tissues requires boiling tissue sections in pH 9 10mM Tris with 1mM EDTA for 10-20 min followed by cooling at RT for 20 min.2. The prediluted format is supplied in a dropper bottle and is optimized for use in IHC. After epitope retrieval step (if required), drip mAb solution onto the tissue section and incubate at RT for 30 min.

IHC:  
Formalin-fixed,  
paraffin-embedded  
h...

**Formula**

0.2 mg/ml in 1X PBS with 0.1 mg/ml BSA (US sourced) and 0.05% sodium azide


**Isotype**

Mouse IgG1, kappa

**Clonality**

Monoclonal

**Purity**

Protein G affinity chromatography

**Uniprot ID**

**P61769**

**Hazard Information**

This Beta-2 Microglobulin antibody is available for research use only.

IHC:  
Formalin-fixed,  
paraffin-embedded  
h...

**Dilution Range**

Immunohistochemistry (FFPE): 1-2ug/ml for 30 min at RT,Western blot: 1-2ug/ml,Flow cytometry: 1-2ug/million cells,Immunofluorescence: 1-2ug/ml

**Expiration Date**

12 months from date of receipt.