
Product Datasheet

Ornithine Decarboxylase Antibody / ODC1 (orb749726)

Description

Recognizes a 53kDa protein, identified as the



an...

Species/Host

Mouse

Reactivity

Human, Mouse, Rat

Conjugation

Unconjugated

Tested Applications

FACS, IF, IHC-P, WB

Immunogen

Recombinant human protein was used as the immunogen for the ODC antibody.

Preservatives

0.2 mg/ml in 1X PBS with 0.1 mg/ml rAlbumin (US sourced) and 0.05% sodium azide

Storage

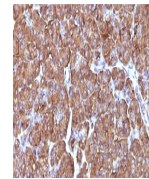
Store the ODC antibody at 2-8°C (with azide) or aliquot and store at -20°C or colder (without azide).

Note

For research use only

Application notes

Optimal dilution of the ODC antibody should be determined by the researcher.1. Staining of formalin-fixed tissues requires boiling tissue sections in 10mM Citrate buffer, pH 6.0, for 10-20 min followed by cooling at RT for 20 min2. The prediluted format is supplied in a dropper bottle and is optimized for use in IHC. After epitope retrieval step (if required), drip mAb solution onto the tissue section and incubate at RT for 30 min.



IHC:
Formalin-fixed, paraffin-embedded h...

Formula

0.2 mg/ml in 1X PBS with 0.1 mg/ml BSA (US sourced) and 0.05% sodium azide

Isotype

Mouse IgG2a, kappa

Clonality

Monoclonal

Purity

Protein G affinity chromatography

Uniprot ID

P11926

Hazard Information

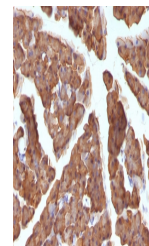
This ODC antibody is available for research use only.

Dilution Range

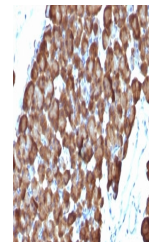
Flow cytometry: 0.5-1ug/million cells, Immunofluorescence: 0.5-1ug/ml, Western blot: 0.5-1ug/ml, Immunohistochemistry (FFPE): 0.25-0.5ug/ml for 30 min at RT

Expiration Date

12 months from date of receipt.



IHC:
Formalin-fixed, paraffin-embedded m...



IHC:
Formalin-fixed, paraffin-embedded r...