

---

## Product Datasheet

### Nucleolin Antibody (orb749714)

**Description**

Recognizes a protein of ~76kDa, which is identified as


**Species/Host**

Mouse

**Reactivity**

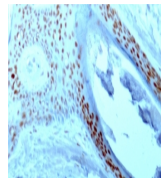
Human

**Conjugation**

Unconjugated

**Tested Applications**

FACS, IF, IHC-P, WB



IHC: Formalin-fixed paraffin-embedded hu...

**Immunogen**

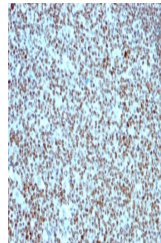
SUDHL1 cell nuclear lysate was used as the immunogen for the NCL antibody.

**Preservatives**

0.2 mg/ml in 1X PBS with 0.1 mg/ml rAlbumin (US sourced) and 0.05% sodium azide

**Storage**

Store the NCL antibody at 2-8°C (with azide) or aliquot and store at -20°C or colder (without azide).



IHC: Formalin-fixed paraffin-embedded hu...

**Note**

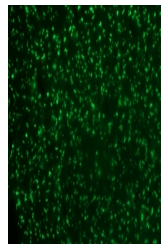
For research use only

**Application notes**

Optimal dilution of the NCL antibody should be determined by the researcher.1. Staining of formalin-fixed tissues is enhanced by boiling tissue sections in 10mM Citrate buffer, pH 6.0, for 10-20 min followed by cooling at RT for 20 min2. The prediluted format is supplied in a dropper bottle and is optimized for use in IHC. After epitope retrieval step (if required), drip mAb solution onto the tissue section and incubate at RT for 30 min.

**Formula**

0.2 mg/ml in 1X PBS with 0.1 mg/ml BSA (US sourced) and 0.05% sodium azide



IHC: Formalin-fixed paraffin-embedded hu...

**Isotype**

Mouse IgG1, kappa

**Clonality**

Monoclonal

**Purity**

Protein G affinity chromatography

**Uniprot ID**

**P19338**

**Hazard Information**

This NCL antibody is available for research use only.

**Dilution Range**

Flow cytometry: 0.5-1ug/million cells,Immunofluorescence: 0.5-1ug/ml,Western blot: 0.5-1ug/ml,Immunohistochemistry (FFPE): 0.25-0.5ug/ml for 30 min at RT

**Expiration Date**

12 months from date of receipt.