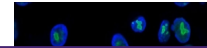

Product Datasheet

Nucleolin Antibody (orb749713)

Description

Recognizes a protein of ~76kDa, which is identified as


Species/Host

Mouse

Reactivity

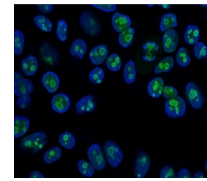
Human

Conjugation

Unconjugated

Tested Applications

FACS, IF, IHC-P, WB



Immunofluorescent staining of PFA-fixed ...

Immunogen

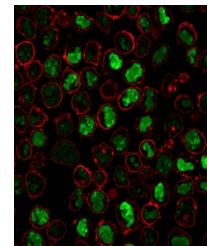
Recombinant human protein was used as the immunogen for the anti-Nucleolin antibody.

Preservatives

0.2 mg/ml in 1X PBS with 0.1 mg/ml rAlbumin (US sourced) and 0.05% sodium azide

Storage

Store the anti-Nucleolin antibody at 2-8°C (with azide) or aliquot and store at -20°C or colder (without azide).



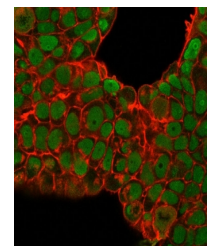
Immunofluorescent staining of PFA-fixed ...

Note

For research use only

Application notes

Optimal dilution of the anti-Nucleolin antibody should be determined by the researcher.1. Staining of formalin-fixed tissues is enhanced by boiling tissue sections in pH 9 10mM Tris with 1mM EDTA for 10-20 min followed by cooling at RT for 20 min.2. The prediluted format is supplied in a dropper bottle and is optimized for use in IHC. After epitope retrieval step (if required), drip mAb solution onto the tissue section and incubate at RT for 30 min.



Immunofluorescent staining of PFA-fixed ...

Formula

0.2 mg/ml in 1X PBS with 0.1 mg/ml BSA (US sourced) and 0.05% sodium azide

Isotype

Mouse IgG1, kappa

Clonality

Monoclonal

Purity

Protein G affinity chromatography

Uniprot ID

P19338

Hazard Information

This anti-Nucleolin antibody is available for research use only.

Dilution Range

Flow cytometry: 1-2ug/million cells, Immunofluorescence: 1-4ug/ml, Western blot: 1-2ug/ml, Immunohistochemistry (FFPE): 1-2ug/ml for 30 min at RT

Expiration Date

12 months from date of receipt.