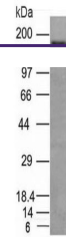

Product Datasheet

NCAM / CD56 Antibody (orb749710)

Description

This mAb reacts with an extracellular domain (close to



Western blot analysis of human HCT116 ce...

Species/Host

Mouse

Reactivity

Human

Conjugation

Unconjugated

Tested Applications

IHC-P, WB

Immunogen

Recombinant human protein was used as the immunogen for the CD56 antibody.

Preservatives

0.2 mg/ml in 1X PBS with 0.1 mg/ml rAlbumin (US sourced) and 0.05% sodium azide

Storage

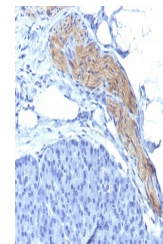
Store the CD56 antibody at 2-8°C (with azide) or aliquot and store at -20°C or colder (without azide).

Note

For research use only

Application notes

Optimal dilution of the CD56 antibody should be determined by the researcher.1. Staining of formalin-fixed tissues is enhanced by boiling tissue sections in 10mM Citrate buffer, pH 6.0, for 10-20 min followed by cooling at RT for 20 min2. The prediluted format is supplied in a dropper bottle and is optimized for use in IHC. After epitope retrieval step (if required), drip mAb solution onto the tissue section and incubate at RT for 30 min.



IHC: FFPE human pancreas tested with CD5...

Formula

0.2 mg/ml in 1X PBS with 0.1 mg/ml BSA (US sourced) and 0.05% sodium azide

Isotype

Mouse IgG1, kappa

Clonality

Monoclonal

Purity

Protein G affinity chromatography

Uniprot ID

P13591

Hazard Information

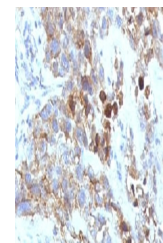
This CD56 antibody is available for research use only.

Dilution Range

Western blot: 0.5-1ug/ml, Immunohistochemistry (FFPE): 0.5-1ug/ml for 30 min at RT (1), Prediluted IHC only format: incubate for 30 min at RT (2)

Expiration Date

12 months from date of receipt.



IHC: Formalin-fixed, paraffin-embedded h...