
Product Datasheet

SMMHC Antibody (Smooth Muscle Myosin Heavy Chain) (orb749707)

Description

Smooth muscle myosin heavy chain (SM-MHC) is a



comp...

Species/Host

Mouse

Reactivity

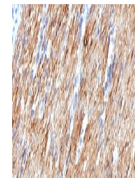
Human

Conjugation

Unconjugated

Tested Applications

IHC-P



IHC:
Formalin-fixed,
paraffin-embedded
h...

Immunogen

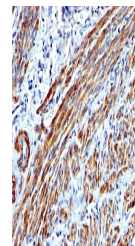
Recombinant human protein was used as the immunogen for the SMMHC antibody.

Preservatives

0.2 mg/ml in 1X PBS with 0.1 mg/ml rAlbumin (US sourced) and 0.05% sodium azide

Storage

Store the SMMHC antibody at 2-8°C (with azide) or aliquot and store at -20°C or colder (without azide).


Note

For research use only

Application notes

Optimal dilution of the SMMHC antibody should be determined by the researcher.1. Staining of formalin/paraffin tissues requires boiling tissue sections in pH 9 10mM Tris with 1mM EDTA for 10-20 min followed by cooling at RT for 20 min.2. The prediluted format is supplied in a dropper bottle and is optimized for use in IHC. After epitope retrieval step (if required), drip mAb solution onto the tissue section and incubate at RT for 30 min.

IHC:
Formalin-fixed,
paraffin-embedded
h...

Formula

0.2 mg/ml in 1X PBS with 0.1 mg/ml BSA (US sourced) and 0.05% sodium azide

Isotype

Mouse IgG1, kappa

Clonality

Monoclonal

Purity

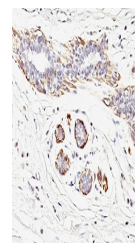
Protein G affinity chromatography

Uniprot ID

P35749

Hazard Information

This SMMHC antibody is available for research use only.



IHC:
Formalin-fixed,
paraffin-embedded
h...

Dilution Range

Immunohistochemistry (FFPE): 1-2ug/ml for 30 min at RT

Expiration Date

12 months from date of receipt.