
Product Datasheet

MUC6 Antibody / Gastric Mucin (orb749697)

Description

The MUC6 gastric mucin is a secreted glycoprotein that


Species/Host

Mouse

Reactivity

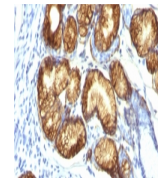
Human

Conjugation

Unconjugated

Tested Applications

FACS, IF, IHC-P



IHC:
Formalin-fixed,
paraffin-embedded
h...

Immunogen

A synthetic peptide of the gastric Mucin 6 tandem repeat sequence was used as the immunogen for the MUC6 antibody.

Preservatives

0.2 mg/ml in 1X PBS with 0.1 mg/ml rAlbumin (US sourced) and 0.05% sodium azide

Storage

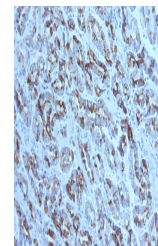
Store the MUC6 antibody at 2-8°C (with azide) or aliquot and store at -20°C or colder (without azide).

Note

For research use only

Application notes

Optimal dilution of the MUC6 antibody should be determined by the researcher.1. The prediluted format is supplied in a dropper bottle and is optimized for use in IHC. After epitope retrieval step (if required), drip mAb solution onto the tissue section and incubate at RT for 30 min.



IHC testing of FFPE human gastric carcin...

Formula

0.2 mg/ml in 1X PBS with 0.1 mg/ml BSA (US sourced) and 0.05% sodium azide

Isotype

Mouse IgG1, kappa

Clonality

Monoclonal

Purity

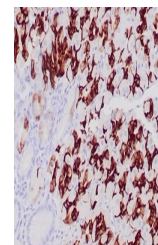
Protein G affinity chromatography

Uniprot ID

[Q6W4X9](#)

Hazard Information

This MUC6 antibody is available for research use only.



IHC staining of glandular cells of FFPE ...

Dilution Range

Flow cytometry: 0.5-1ug/million cells, Immunofluorescence: 1-2ug/ml, Immunohistochemistry (FFPE): 2-4ug/ml for 30 min at RT

Expiration Date

12 months from date of receipt.