

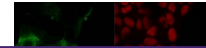
---

## Product Datasheet

### MUC1 Antibody / Mucin-1 (orb749681)

**Description**

This mAb recognizes full-length MUC1/Mucin-


**Species/Host**

Mouse

**Reactivity**

Human

**Conjugation**

Unconjugated

**Tested Applications**

FACS, IF, IHC-P, WB

Immunofluorescent staining of PFA-fixed ...

**Immunogen**

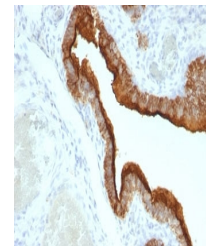
Human breast cancer cell line ZR-75 cells were used as the immunogen for the MUC-1 antibody.

**Preservatives**

0.2 mg/ml in 1X PBS with 0.1 mg/ml rAlbumin (US sourced) and 0.05% sodium azide

**Storage**

Store the MUC-1 antibody at 2-8°C (with azide) or aliquot and store at -20°C or colder (without azide).



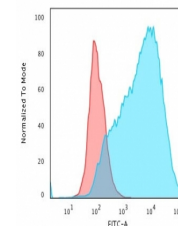
IHC: Formalin-fixed, paraffin-embedded h...

**Note**

For research use only

**Application notes**

Optimal dilution of the MUC-1 antibody should be determined by the researcher.1. Staining of formalin-fixed tissues requires boiling tissue sections in pH 9 10mM Tris with 1mM EDTA for 10-20 min followed by cooling at RT for 20 min2. The prediluted format is supplied in a dropper bottle and is optimized for use in IHC. After epitope retrieval step (if required), drip mAb solution onto the tissue section and incubate at RT for 30 min.



Flow cytometry testing of PFA-fixed huma...

**Formula**

0.2 mg/ml in 1X PBS with 0.1 mg/ml BSA (US sourced) and 0.05% sodium azide

**Isotype**

Mouse IgG1, kappa

**Clonality**

Monoclonal

**Purity**

Protein G affinity chromatography

**Uniprot ID**

**P15941**

**Hazard Information**

This MUC-1 antibody is available for research use only.

**Dilution Range**

Flow cytometry: 1-2ug/million cells, Immunofluorescence: 1-2ug/ml, Immunohistochemistry (FFPE): 1-2ug/ml for 30 min at RT, Western blot: 1-2ug/ml

**Expiration Date**

12 months from date of receipt.