

Product Datasheet

Moesin Antibody (orb749679)

Description

Recognizes 78kDa moesin protein. Moesin, a member of the


Species/Host

Mouse

Reactivity

Human

Conjugation

Unconjugated

Tested Applications

FACS, IF, IHC-P, WB

Immunogen

Recombinant full-length human protein was used as the immunogen for the Moesin antibody.

Preservatives

0.2 mg/ml in 1X PBS with 0.1 mg/ml rAlbumin (US sourced) and 0.05% sodium azide

Storage

Store the Moesin antibody at 2-8°C (with azide) or aliquot and store at -20°C or colder (without azide).

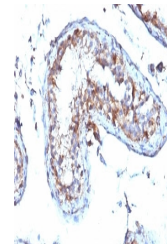
Note

For research use only

Application notes

Optimal dilution of the Moesin antibody should be determined by the researcher.1. Staining of formalin-fixed tissues requires boiling tissue sections in 10mM Citrate buffer, pH 6.0, for 10-20 min followed by cooling at RT for 20 min2. The prediluted format is supplied in a dropper bottle and is optimized for use in IHC. After epitope retrieval step (if required), drip mAb solution onto the tissue section and incubate at RT for 30 min.

IHC: Formalin-fixed, paraffin-embedded h...



IHC: Formalin-fixed, paraffin-embedded h...

Formula

0.2 mg/ml in 1X PBS with 0.1 mg/ml BSA (US sourced) and 0.05% sodium azide

Isotype

Mouse IgG1, kappa

Clonality

Monoclonal

Purity

Protein G affinity chromatography

Uniprot ID

P26038

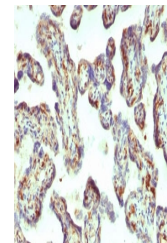
Hazard Information

This Moesin antibody is available for research use only.

Dilution Range

Flow cytometry: 1-2ug/million cells,Immunofluorescence: 1-2ug/ml,Western blot: 1-2ug/ml,Immunohistochemistry (FFPE): 1-2ug/ml for 30 min at RT

IHC: Formalin-fixed, paraffin-embedded h...


Expiration Date

12 months from date of receipt.