
Product Datasheet

Milk Fat Globule Antibody (MFG-E8, Lactadherin) (orb749667)

Description

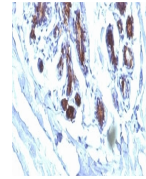
Recognizes a protein of 40-45kDa, identified as



Lact...

Species/Host

Mouse


Reactivity

Human

Conjugation

Unconjugated

Tested Applications

FACS, IF, IHC-P

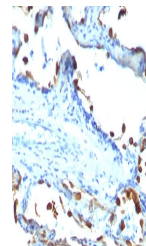
IHC analysis of formalin-fixed, paraffin...

Immunogen

A delipidated human milk fat globule membrane preparation was used as the immunogen for the Lactadherin antibody.

Preservatives

0.2 mg/ml in 1X PBS with 0.1 mg/ml rAlbumin (US sourced) and 0.05% sodium azide


Storage

Store the Lactadherin antibody at 2-8°C (with azide) or aliquot and store at -20°C or colder (without azide).

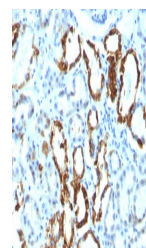
Note

For research use only

IHC analysis of FFPE human lung carcinom...

Application notes

Optimal dilution of the Lactadherin antibody should be determined by the researcher.1. Staining of formalin-fixed tissues requires boiling tissue sections in 10mM Citrate buffer, pH 6.0, for 10-20 min followed by cooling at RT for 20 min2. The prediluted format is supplied in a dropper bottle and is optimized for use in IHC. After epitope retrieval step (if required), drip mAb solution onto the tissue section and incubate at RT for 30 min.


Formula

0.2 mg/ml in 1X PBS with 0.1 mg/ml BSA (US sourced) and 0.05% sodium azide

Isotype

Mouse IgG1, kappa

IHC analysis of FFPE human renal cell ca...

Clonality

Monoclonal

Purity

Protein G affinity chromatography

Uniprot ID

Q08431

Hazard Information

This Lactadherin antibody is available for research use only.

Dilution Range

Flow cytometry: 0.5-1ug/million cells, Immunofluorescence: 1-2ug/ml, Immunohistochemistry (FFPE): 0.5-1ug/ml for 30 min at RT

Expiration Date

12 months from date of receipt.