

---

## Product Datasheet

### MAP3K1 Antibody (MEKK1) (orb749664)

**Description**

Mitogen-activated protein (MAP) kinase cascades are

**Species/Host**

Mouse

**Reactivity**

Human

**Conjugation**

Unconjugated

**Tested Applications**

IHC-P, WB

**Immunogen**

A partial recombinant protein (aa 1211-1310) was used as the immunogen for the MAP3K1 antibody.

**Preservatives**

0.2 mg/ml in 1X PBS with 0.1 mg/ml rAlbumin (US sourced) and 0.05% sodium azide

**Storage**

Store the MAP3K1 antibody at 2-8°C (with azide) or aliquot and store at -20°C or colder (without azide).

**Note**

For research use only

**Application notes**

Optimal dilution of the MAP3K1 antibody should be determined by the researcher.1. Staining of formalin-fixed tissues requires boiling tissue sections in 10mM Tris with 1mM EDTA, pH 9.0, for 10-20 min followed by cooling at RT for 20 min2. The prediluted format is supplied in a dropper bottle and is optimized for use in IHC. After epitope retrieval step (if required), drip mAb solution onto the tissue section and incubate at RT for 30 min.

**Formula**

0.2 mg/ml in 1X PBS with 0.1 mg/ml BSA (US sourced) and 0.05% sodium azide

**Isotype**

Mouse IgG2a, kappa

**Clonality**

Monoclonal

**Purity**

Protein G affinity chromatography

**Uniprot ID**

[Q13233](#)

**Hazard Information**

This MAP3K1 antibody is available for research use only.

**Dilution Range**

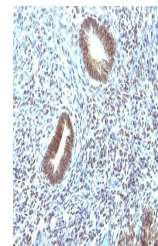
Western blot: 0.5-1ug/ml, Immunohistochemistry (FFPE): 1-2ug/ml for 30 min at RT

**Expiration Date**

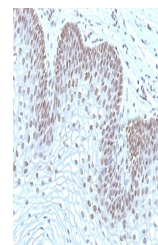
12 months from date of receipt.



IHC:  
Formalin-fixed,  
paraffin-embedded  
h...



IHC:  
Formalin-fixed,  
paraffin-embedded  
h...



IHC:  
Formalin-fixed,  
paraffin-embedded  
h...