
Product Datasheet

CD146 Antibody / MCAM / MUC18 (orb749662)

Description

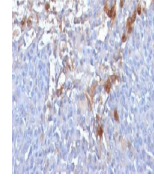
The human Mel-CAM gene maps to chromosome 11q23



Species/Host Mouse

desi...

Reactivity Human



Conjugation Unconjugated

Tested Applications FACS, IF, IHC-P

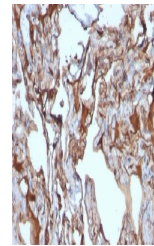
IHC:
Formalin-fixed,
paraffin-embedded
h...

Immunogen Recombinant human protein was used as the immunogen for the CD146 antibody.

Preservatives 0.2 mg/ml in 1X PBS with 0.1 mg/ml rAlbumin (US sourced) and 0.05% sodium azide

Storage Store the CD146 antibody at 2-8°C (with azide) or aliquot and store at -20°C or colder (without azide).

Note For research use only



Application notes Optimal dilution of the CD146 antibody should be determined by the researcher.1. Staining of formalin-fixed tissues requires boiling tissue sections in 10mM Tris with 1mM EDTA, pH 9.0, for 10-20 min followed by cooling at RT for 20 min2. The prediluted format is supplied in a dropper bottle and is optimized for use in IHC. After epitope retrieval step (if required), drip mAb solution onto the tissue section and incubate at RT for 30 min.

IHC:
Formalin-fixed,
paraffin-embedded
h...

Formula 0.2 mg/ml in 1X PBS with 0.1 mg/ml BSA (US sourced) and 0.05% sodium azide

Isotype Mouse IgG1, kappa

Clonality Monoclonal

Purity Protein G affinity chromatography

Uniprot ID [P43121](#)

Hazard Information This CD146 antibody is available for research use only.

Dilution Range Flow cytometry: 0.5-1ug/million cells,Immunofluorescence: 0.5-1ug/ml,Immunohistochemistry (FFPE): 0.5-1ug/ml for 30 min at RT

Expiration Date 12 months from date of receipt.