

---

## Product Datasheet

**CD146 Antibody / MCAM / MUC18 (orb749659)**

**Description**

The human Mel-CAM gene maps to chromosome 11q23



desi...  
**Species/Host** Mouse

**Reactivity** Human

**Conjugation** Unconjugated

**Tested Applications** FACS, IF, IHC-P

**Immunogen** Recombinant human protein was used as the immunogen for the MCAM antibody.

**Preservatives** 0.2 mg/ml in 1X PBS with 0.1 mg/ml rAlbumin (US sourced) and 0.05% sodium azide

**Storage** Store the MCAM antibody at 2-8°C (with azide) or aliquot and store at -20°C or colder (without azide).

**Note** For research use only

**Application notes** Optimal dilution of the MCAM antibody should be determined by the researcher.1. Staining of formalin-fixed tissues requires boiling tissue sections in 10mM Citrate buffer, pH 6.0, for 10-20 min followed by cooling at RT for 20 min2. The prediluted format is supplied in a dropper bottle and is optimized for use in IHC. After epitope retrieval step (if required), drip mAb solution onto the tissue section and incubate at RT for 30 min.

**Formula** 0.2 mg/ml in 1X PBS with 0.1 mg/ml BSA (US sourced) and 0.05% sodium azide

**Isotype** Mouse IgG1, kappa

**Clonality** Monoclonal

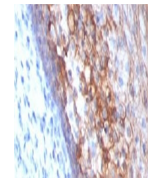
**Purity** Protein G affinity chromatography

**Uniprot ID** **P43121**

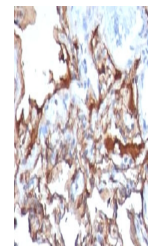
**Hazard Information** This MCAM antibody is available for research use only.

**Dilution Range** Flow cytometry: 0.5-1ug/million cells,Immunofluorescence: 0.5-1ug/ml,Immunohistochemistry (FFPE): 0.5-1ug/ml for 30 min at RT

**Expiration Date** 12 months from date of receipt.



IHC:  
Formalin-fixed,  
paraffin-embedded  
h...



IHC:  
Formalin-fixed,  
paraffin-embedded  
h...