
Product Datasheet

**EpCAM Antibody / Cytoplasmic domain
(orb749649)**

Description

EGP40 is a 40-43kDa transmembrane epithelial


Species/Host

Mouse

Reactivity

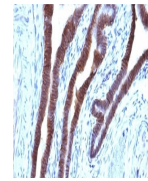
Canine, Feline, Human, Mouse, Rat

Conjugation

Unconjugated

Tested Applications

IHC-P



IHC:
Formalin-fixed,
paraffin-embedded
h...

Immunogen

A portion of amino acids 289-314 (cytoplasmic domain) was used as the immunogen for the EpCAM antibody.

Preservatives

0.2 mg/ml in 1X PBS with 0.1 mg/ml rAlbumin (US sourced) and 0.05% sodium azide

Storage

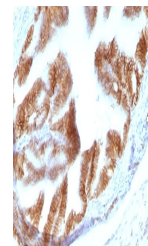
Store the EpCAM antibody at 2-8°C (with azide) or aliquot and store at -20°C or colder (without azide).

Note

For research use only

Application notes

Optimal dilution of the EpCAM antibody should be determined by the researcher.1. Staining of formalin-fixed tissues requires boiling tissue sections in 10mM Citrate buffer, pH 6.0, for 10-20 min followed by cooling at RT for 20 min2. The prediluted format is supplied in a dropper bottle and is optimized for use in IHC. After epitope retrieval step (if required), drip mAb solution onto the tissue section and incubate at RT for 30 min.



IHC:
Formalin-fixed,
paraffin-embedded
r...

Formula

0.2 mg/ml in 1X PBS with 0.1 mg/ml BSA (US sourced) and 0.05% sodium azide

Isotype

Mouse IgG2b, kappa

Clonality

Monoclonal

Purity

Protein G affinity chromatography

Uniprot ID

P16422

Hazard Information

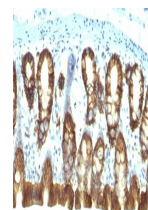
This EpCAM antibody is available for research use only.

Dilution Range

Immunohistochemistry (FFPE): 0.5-1ug/ml for 30 min at RT

Expiration Date

12 months from date of receipt.



IHC:
Formalin-fixed,
paraffin-embedded
r...