
Product Datasheet

Luteinizing Hormone beta Antibody (orb749648)

Description

Luteinizing hormone (LH) is a glycoprotein. Each


Species/Host

Mouse

Reactivity

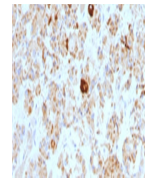
Human

Conjugation

Unconjugated

Tested Applications

IHC-P



IHC testing of formalin-fixed, paraffin-...

Immunogen

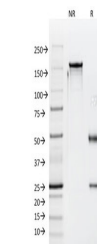
Recombinant beta sub-unit of human LH was used as the immunogen for the Luteinizing Hormone beta antibody.

Preservatives

0.2 mg/ml in 1X PBS with 0.1 mg/ml rAlbumin (US sourced) and 0.05% sodium azide

Storage

Store the Luteinizing Hormone beta antibody at 2-8°C (with azide) or aliquot and store at -20°C or colder (without azide).



SDS-PAGE analysis of purified, BSA-free ...

Note

For research use only

Application notes

Optimal dilution of the Luteinizing Hormone beta antibody should be determined by the researcher.1. Staining of formalin-fixed tissues requires boiling tissue sections in pH 9 10mM Tris with 1mM EDTA for 10-20 min followed by cooling at RT for 20 min

Formula

0.2 mg/ml in 1X PBS with 0.1 mg/ml BSA (US sourced) and 0.05% sodium azide

Isotype

Mouse IgG1, kappa

Clonality

Monoclonal

Purity

Protein G affinity chromatography

Uniprot ID

P01229

Hazard Information

This Luteinizing Hormone beta antibody is available for research use only.

Dilution Range

Immunohistochemistry (FFPE): 1-2ug/ml for 30 min at RT

Expiration Date

12 months from date of receipt.