

---

## Product Datasheet

### Luteinizing Hormone beta Antibody (orb749647)

**Description**

Luteinizing hormone (LH) is a glycoprotein. Each


**Species/Host**

Mouse

**Reactivity**

Human

**Conjugation**

Unconjugated

**Tested Applications**

IHC-P

**Immunogen**

Recombinant beta sub-unit of human LH was used as the immunogen for the Luteinizing Hormone beta antibody.

**Preservatives**

0.2 mg/ml in 1X PBS with 0.1 mg/ml rAlbumin (US sourced) and 0.05% sodium azide

**Storage**

Store the Luteinizing Hormone beta antibody at 2-8°C (with azide) or aliquot and store at -20°C or colder (without azide).

**Note**

For research use only

**Application notes**

Optimal dilution of the Luteinizing Hormone beta antibody should be determined by the researcher.1. Staining of formalin-fixed tissues requires boiling tissue sections in 10mM Citrate buffer, pH 6.0, for 10-20 min followed by cooling at RT for 20 min

**Formula**

0.2 mg/ml in 1X PBS with 0.1 mg/ml BSA (US sourced) and 0.05% sodium azide

**Isotype**

Mouse IgG1, kappa

**Clonality**

Monoclonal

**Purity**

Protein G affinity chromatography

**Uniprot ID**

**P01229**

**Hazard Information**

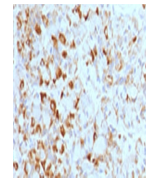
This Luteinizing Hormone beta antibody is available for research use only.

**Dilution Range**

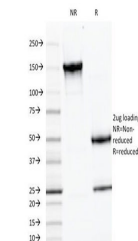
Immunohistochemistry (FFPE): 1-2ug/ml for 30 min at RT

**Expiration Date**

12 months from date of receipt.



IHC testing of formalin-fixed, paraffin-...



SDS-PAGE Analysis of Purified, BSA-Free ...