

---

## Product Datasheet

### KRT8 Antibody / Cytokeratin 8 (orb749630)

**Description**

Cytokeratin 8 (CK8) belongs to the type II (or B or basic)

**Species/Host**

Mouse

**Reactivity**

Human

**Conjugation**

Unconjugated

**Tested Applications**

IF, IHC-P, WB

**Immunogen**

A cytoskeletal preparation from HeLa cells was used as the immunogen for the Cytokeratin 8 antibody.

**Preservatives**

0.2 mg/ml in 1X PBS with 0.1 mg/ml rAlbumin (US sourced) and 0.05% sodium azide

**Storage**

Store the Cytokeratin 8 antibody at 2-8°C (with azide) or aliquot and store at -20°C or colder (without azide).

**Note**

For research use only

**Application notes**

Optimal dilution of the Cytokeratin 8 antibody should be determined by the researcher.1. Staining of formalin-fixed tissues requires boiling tissue sections in 10mM Citrate buffer, pH 6.0, for 10-20 min followed by cooling at RT for 20 min2. The prediluted format is supplied in a dropper bottle and is optimized for use in IHC. After epitope retrieval step (if required), drip mAb solution onto the tissue section and incubate at RT for 30 min.

**Formula**

0.2 mg/ml in 1X PBS with 0.1 mg/ml BSA (US sourced) and 0.05% sodium azide

**Isotype**

Mouse IgG1, kappa

**Clonality**

Monoclonal

**Purity**

Protein G affinity chromatography

**Uniprot ID**

**P05787**

**Hazard Information**

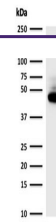
This Cytokeratin 8 antibody is available for research use only.

**Dilution Range**

Immunofluorescence: 1-2ug/ml,Western blot: 1-2ug/ml,Immunohistochemistry (FFPE): 0.5-1ug/ml for 30 min at RT

**Expiration Date**

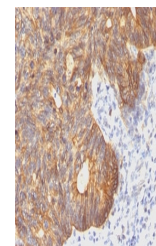
12 months from date of receipt.



Western blot testing of human MCF7 cell ...



Western blot testing of human HCT-116 ce...



IHC: Formalin-fixed, paraffin-embedded h...