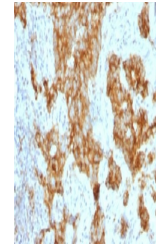


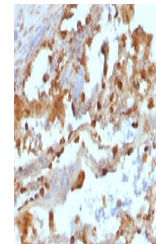
## Product Datasheet

### CD11c Antibody / ITGAX (orb749613)

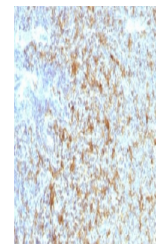
<b>Description</b>	Recognizes a protein of 145kDa, identified as CD11c. CD11c (ITGAX), a member of the leukointegrin fa...
<b>Species/Host</b>	Mouse
<b>Reactivity</b>	Human
<b>Conjugation</b>	Unconjugated
<b>Tested Applications</b>	ELISA
<b>Immunogen</b>	A partial recombinant protein corresponding to amino acids 637-827 from human ITGAX/CD11c was used as the immunogen for the CD11c antibody.
<b>Preservatives</b>	0.2 mg/ml in 1X PBS with 0.1 mg/ml rAlbumin (US sourced) and 0.05% sodium azide
<b>Storage</b>	Store the CD11c antibody at 2-8°C (with azide) or aliquot and store at -20°C or colder (without azide).
<b>Note</b>	For research use only
<b>Application notes</b>	Optimal dilution of the CD11c antibody should be determined by the researcher.
<b>Formula</b>	0.2 mg/ml in 1X PBS with 0.1 mg/ml BSA (US sourced) and 0.05% sodium azide
<b>Isotype</b>	Mouse IgG2b, kappa
<b>Clonality</b>	Monoclonal
<b>Purity</b>	Protein G affinity chromatography
<b>Uniprot ID</b>	<b>P20702</b>
<b>Hazard Information</b>	This CD11c antibody is available for research use only.
<b>Dilution Range</b>	ELISA: 2-4ug/ml (order BSA/azide-free format)
<b>Expiration Date</b>	12 months from date of receipt.



IHC testing of FFPE human prostate carci...



IHC testing of FFPE human lung carcinoma...



IHC testing of FFPE human follicular lym...