

---

## Product Datasheet

### IDH1 Antibody / Isocitrate Dehydrogenase (orb749585)

**Description**

It recognizes a 45kDa protein, which is identified as


**Species/Host**

Mouse

**Reactivity**

Human

**Conjugation**

Unconjugated

**Tested Applications**

IF, IHC-P



IHC:  
Formalin-fixed,  
paraffin-embedded  
h...

**Immunogen**

A recombinant fragment (119 amino acid residues around aa 280-420) from the human protein was used as the immunogen for the IDH1 antibody.

**Preservatives**

0.2 mg/ml in 1X PBS with 0.1 mg/ml rAlbumin (US sourced) and 0.05% sodium azide

**Storage**

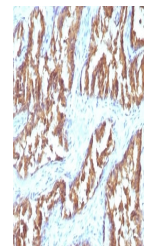
Store the IDH1 antibody at 2-8°C (with azide) or aliquot and store at -20°C or colder (without azide).

**Note**

For research use only

**Application notes**

Optimal dilution of the IDH1 antibody should be determined by the researcher.1. Staining of formalin-fixed tissues requires boiling tissue sections in 10mM Tris with 1mM EDTA, pH 9.0 or 10mM Citrate buffer, pH 6.0, for 10-20 min followed by cooling at RT for 20 min2. The prediluted format is supplied in a dropper bottle and is optimized for use in IHC. After epitope retrieval step (if required), drip mAb solution onto the tissue section and incubate at RT for 30 min.



IHC:  
Formalin-fixed,  
paraffin-embedded  
h...

**Formula**

0.2 mg/ml in 1X PBS with 0.1 mg/ml BSA (US sourced) and 0.05% sodium azide

**Isotype**

Mouse IgG1, kappa

**Clonality**

Monoclonal

**Purity**

Protein G affinity chromatography

**Uniprot ID**

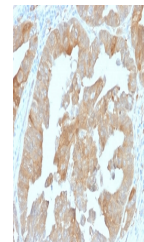
**075874**

**Hazard Information**

This IDH1 antibody is available for research use only.

**Dilution Range**

Immunohistochemistry (FFPE): 1-2ug/ml for 30 min at RT, Immunofluorescence: 1-2ug/ml



IHC:  
Formalin-fixed,  
paraffin-embedded  
h...

**Expiration Date**

12 months from date of receipt.