

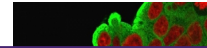
---

## Product Datasheet

### HSP27 Antibody / HSPB1 (orb749572)

**Description**

It recognizes a 24-27kDa estrogen-regulated protein,


**Species/Host**

Mouse

**Reactivity**

Human

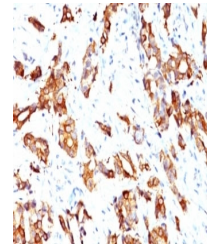
**Conjugation**

Unconjugated

**Tested Applications**

FACS, IF, IHC-P, WB

Immunofluorescent staining of PFA-fixed ...



IHC: Formalin-fixed, paraffin-embedded h...

**Immunogen**

Recombinant human HSPB1 protein was used as the immunogen for the HSP27 antibody.

**Preservatives**

0.2 mg/ml in 1X PBS with 0.1 mg/ml rAlbumin (US sourced) and 0.05% sodium azide

**Storage**

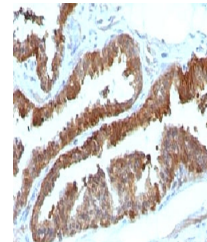
Store the HSP27 antibody at 2-8°C (with azide) or aliquot and store at -20°C or colder (without azide).

**Note**

For research use only

**Application notes**

Optimal dilution of the HSP27 antibody should be determined by the researcher.1. Staining of formalin-fixed tissues requires boiling tissue sections in pH 9 10mM Tris with 1mM EDTA for 10-20 min followed by cooling at RT for 20 min2. The prediluted format is supplied in a dropper bottle and is optimized for use in IHC. After epitope retrieval step (if required), drip mAb solution onto the tissue section and incubate at RT for 30 min.



IHC: Formalin-fixed, paraffin-embedded h...

**Formula**

0.2 mg/ml in 1X PBS with 0.1 mg/ml BSA (US sourced) and 0.05% sodium azide

**Isotype**

Mouse IgG1, kappa

**Clonality**

Monoclonal

**Purity**

Protein G affinity chromatography

**Uniprot ID**

**P04792**

**Hazard Information**

This HSP27 antibody is available for research use only.

**Dilution Range**

Flow cytometry: 1-2ug/million cells,Immunofluorescence: 1-2ug/ml,Immunohistochemistry (FFPE): 1-2ug/ml for 30 min at RT,Western blot: 1-2ug/ml

**Expiration Date**

12 months from date of receipt.