
Product Datasheet

HLA-DRB1 Antibody (MHC II) (orb749570)

Description

This mAb reacts with the beta-chain of HLA-DRB1

Species/Host

Mouse

Reactivity

Human

Conjugation

Unconjugated

Tested Applications

FACS, IF, IHC-P, WB

Immunogen

Activated human peripheral blood mononuclear cells were used as the immunogen for the HLA-DRB1 antibody.

Preservatives

0.2 mg/ml in 1X PBS with 0.1 mg/ml rAlbumin (US sourced) and 0.05% sodium azide

Storage

Store the HLA-DRB1 antibody at 2-8°C (with azide) or aliquot and store at -20°C or colder (without azide).

Note

For research use only

Application notes

Optimal dilution of the HLA-DRB1 antibody should be determined by the researcher.1. Staining of formalin-fixed tissues is enhanced by boiling tissue sections in pH 9 10mM Tris with 1mM EDTA for 10-20 min followed by cooling at RT for 20 min2. The prediluted format is supplied in a dropper bottle and is optimized for use in IHC. After epitope retrieval step (if required), drip mAb solution onto the tissue section and incubate at RT for 30 min.

Formula

0.2 mg/ml in 1X PBS with 0.1 mg/ml BSA (US sourced) and 0.05% sodium azide

Isotype

Mouse IgG2b, kappa

Clonality

Monoclonal

Purity

Protein G affinity chromatography

Uniprot ID

P01911

Hazard Information

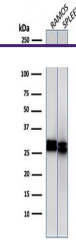
This HLA-DRB1 antibody is available for research use only.

Dilution Range

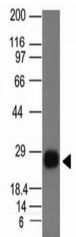
Flow cytometry: 1-2ug/million cells,Immunofluorescence: 2-4ug/ml,Western blot: 1-2ug/ml,Immunohistochemistry (FFPE): 0.25-0.5ug/ml for 30 min at RT

Expiration Date

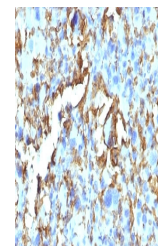
12 months from date of receipt.



Western blot
Analysis of
human 1)
Ramos a...



Western blot
Analysis of
Ramos cell
Lyste...



IHC:
Formalin-
fixed,
paraffin-
embedded
h...