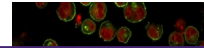

Product Datasheet

HLA-DRB1 Antibody (MHC II) (orb749567)

Description

This mAb reacts with the beta-chain of HLA-DR



n...

Species/Host

Mouse

Reactivity

Human

Conjugation

Unconjugated

Tested Applications

FACS, IF, IHC-P, WB

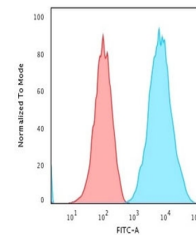
Immunofluorescent staining of human Raji...

Immunogen

Activated human peripheral blood mononuclear cells were used as the immunogen for the HLA-DRB1 antibody.

Preservatives

0.2 mg/ml in 1X PBS with 0.1 mg/ml rAlbumin (US sourced) and 0.05% sodium azide



Flow cytometry testing of human Raji cel...

Storage

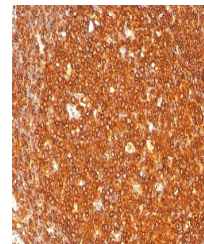
Store the HLA-DRB1 antibody at 2-8°C (with azide) or aliquot and store at -20°C or colder (without azide).

Note

For research use only

Application notes

Optimal dilution of the HLA-DRB1 antibody should be determined by the researcher.1. The prediluted format is supplied in a dropper bottle and is optimized for use in IHC. After epitope retrieval step (if required), drip mAb solution onto the tissue section and incubate at RT for 30 min.



IHC staining of FFPE human tonsil with H...

Formula

0.2 mg/ml in 1X PBS with 0.1 mg/ml BSA (US sourced) and 0.05% sodium azide

Isotype

Mouse IgG2b, kappa

Clonality

Monoclonal

Purity

Protein G affinity chromatography

Uniprot ID

P01911

Hazard Information

This HLA-DRB1 antibody is available for research use only.

Dilution Range

Flow Cytometry: 1-2ug/million cells in 0.1ml, Immunofluorescence: 2-4ug/ml, Western blot: 1-2ug/ml, Immunohistochemistry (FFPE): 1-2ug/ml for 30 min at RT, Prediluted IHC only format: incubate for 30 min at RT (1)

Expiration Date

12 months from date of receipt.