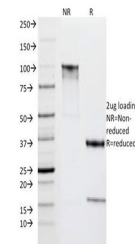


Product Datasheet

HLA-DR Antibody (MHC II) (orb749565)

Description	mAb IPO-10 defines the antigen, which appears on B cell progenitors following HLA-DR and preceding C...
Species/Host	Mouse
Reactivity	Human
Conjugation	Unconjugated
Tested Applications	FACS, IF
Immunogen	Spleen cells from a patient with hairy cell leukemia were used as the immunogen for the HLA-DR antibody.
Preservatives	0.2 mg/ml in 1X PBS with 0.1 mg/ml rAlbumin (US sourced) and 0.05% sodium azide
Storage	Store the HLA-DR antibody at 2-8°C (with azide) or aliquot and store at -20°C or colder (without azide).
Note	For research use only
Application notes	Optimal dilution of the HLA-DR antibody should be determined by the researcher.
Formula	0.2 mg/ml in 1X PBS with 0.1 mg/ml BSA (US sourced) and 0.05% sodium azide
Isotype	Mouse IgG3, kappa
Clonality	Monoclonal
Purity	Protein G affinity chromatography
Uniprot ID	P01903
Hazard Information	This HLA-DR antibody is available for research use only.
Dilution Range	Flow cytometry: 1-2ug/million cells, Immunofluorescence: 1-2ug/ml
Expiration Date	12 months from date of receipt.



SDS-PAGE Analysis of Purified, BSA-Free ...