
Product Datasheet

Histone H1 Antibody (orb749551)

Description

Eukaryotic histones are basic and water-soluble nuclear


Species/Host

Mouse

Reactivity

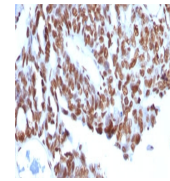
Human, Mouse, Rat

Conjugation

Unconjugated

Tested Applications

FACS, IF, IHC-P, WB



IHC: FFPE human ovarian carcinoma tested...

Immunogen

Nuclei of human leukemia biopsy cells were used as the immunogen for the anti-Histone H1 antibody.

Preservatives

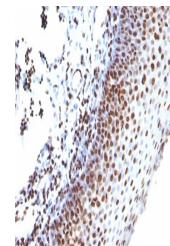
0.2 mg/ml in 1X PBS with 0.1 mg/ml rAlbumin (US sourced) and 0.05% sodium azide

Storage

Store the anti-Histone H1 antibody at 2-8°C (with azide) or aliquot and store at -20°C or colder (without azide).

Note

For research use only



IHC: Formalin-fixed, paraffin-embedded h...

Application notes

Optimal dilution of the anti-Histone H1 antibody should be determined by the researcher.1. Staining of formalin/paraffin tissues requires boiling tissue sections in pH 9 10mM Tris with 1mM EDTA for 10-20 min followed by cooling at RT for 20 min.2. The prediluted format is supplied in a dropper bottle and is optimized for use in IHC. After epitope retrieval step (if required), drip mAb solution onto the tissue section and incubate at RT for 30 min.

Formula

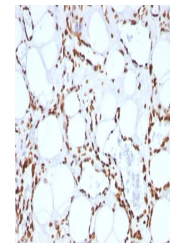
0.2 mg/ml in 1X PBS with 0.1 mg/ml BSA (US sourced) and 0.05% sodium azide

Isotype

Mouse IgG2a, kappa

Clonality

Monoclonal



IHC: FFPE human angiosarcoma tested with...

Purity

Protein G affinity chromatography

Uniprot ID

P07305

Hazard Information

This anti-Histone H1 antibody is available for research use only.

Dilution Range

Immunofluorescence: 1-2ug/ml, Immunohistochemistry (FFPE): 1-2ug/ml for 30 min at RT, Western blot: 1-2ug/ml, Flow cytometry: 1-2ug/million cells

Expiration Date

12 months from date of receipt.