

---

## Product Datasheet

### GnRH Receptor Antibody / GNRHR (orb749537)

**Description**

Recognizes an epitope on the extracellular domain of


**Species/Host**

Mouse

**Reactivity**

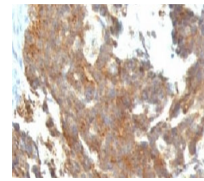
Human

**Conjugation**

Unconjugated

**Tested Applications**

IF, IHC-P



IHC: Formalin-fixed, paraffin-embedded h...

**Immunogen**

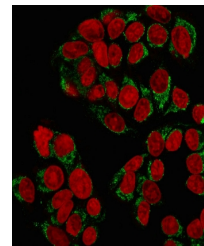
Recombinant full-length human GnRHR protein was used as the immunogen for the GnRH Receptor antibody.

**Preservatives**

0.2 mg/ml in 1X PBS with 0.1 mg/ml rAlbumin (US sourced) and 0.05% sodium azide

**Storage**

Store the GnRH Receptor antibody at 2-8°C (with azide) or aliquot and store at -20°C or colder (without azide).



Immunofluorescent staining of MeOH-fixed...

**Note**

For research use only

**Application notes**

Optimal dilution of the GnRH Receptor antibody should be determined by the researcher.1. Staining of formalin-fixed tissues requires boiling tissue sections in 10mM Tris with 1mM EDTA, pH 9.0, for 10-20 min followed by cooling at RT for 20 min2. The prediluted format is supplied in a dropper bottle and is optimized for use in IHC. After epitope retrieval step (if required), drip mAb solution onto the tissue section and incubate at RT for 30 min.

**Formula**

0.2 mg/ml in 1X PBS with 0.1 mg/ml BSA (US sourced) and 0.05% sodium azide

**Isotype**

Mouse IgG1, kappa

**Clonality**

Monoclonal

**Purity**

Protein G affinity chromatography

**Uniprot ID**

**P30968**

**Hazard Information**

This GnRH Receptor antibody is available for research use only.

**Dilution Range**

Immunofluorescence: 1-2ug/ml, Immunohistochemistry (FFPE): 1-2ug/ml for 30 min at RT

**Expiration Date**

12 months from date of receipt.