
Product Datasheet

Golgi Antibody (orb749533)

Description

This mAb recognizes a protein of 134kDa, which binds


Species/Host

Mouse

Reactivity

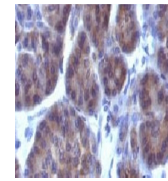
Human

Conjugation

Unconjugated

Tested Applications

IHC-P



IHC: Formalin-fixed, paraffin-embedded h...

Immunogen

The Golgi fraction from human liver cells was used as the immunogen for the Golgi Marker antibody.

Preservatives

0.2 mg/ml in 1X PBS with 0.1 mg/ml rAlbumin (US sourced) and 0.05% sodium azide

Storage

Store the Golgi Marker antibody at 2-8°C (with azide) or aliquot and store at -20°C or colder (without azide).

Note

For research use only

Application notes

Optimal dilution of the Golgi Marker antibody should be determined by the researcher.1. Staining of formalin-fixed tissues requires boiling tissue sections in pH 9 10mM Tris with 1mM EDTA for 10-20 min followed by cooling at RT for 20 minutes2. The prediluted format is supplied in a dropper bottle and is optimized for use in IHC. After epitope retrieval step (if required), drip mAb solution onto the tissue section and incubate at RT for 30 min.

Formula

0.2 mg/ml in 1X PBS with 0.1 mg/ml BSA (US sourced) and 0.05% sodium azide

Isotype

Mouse IgG1, kappa

Clonality

Monoclonal

Purity

Protein G affinity chromatography

Uniprot ID

[Q92896](#)

Hazard Information

This Golgi Marker antibody is available for research use only.

Dilution Range

Immunohistochemistry (FFPE): 0.1-0.2ug/ml for 30 min at RT

Expiration Date

12 months from date of receipt.