
Product Datasheet

Glypican 3 Antibody / GPC3 (orb749528)

Description

Glypican-3 (GPC3) is a glycosylphosphatidyl inositol-


Species/Host

Mouse

Reactivity

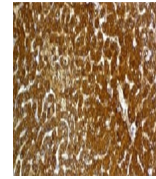
Human, Rat

Conjugation

Unconjugated

Tested Applications

FACS, IF, IHC-P



IHC:
Formalin-fixed,
paraffin-embedded
h...

Immunogen

Recombinant full-length human GPC3 protein was used as the immunogen for the Glypican-3 antibody.

Preservatives

0.2 mg/ml in 1X PBS with 0.1 mg/ml rAlbumin (US sourced) and 0.05% sodium azide

Storage

Store the Glypican-3 antibody at 2-8°C (with azide) or aliquot and store at -20°C or colder (without azide).

Note

For research use only

Application notes

Optimal dilution of the Glypican-3 antibody should be determined by the researcher.1. Staining of formalin-fixed tissues requires boiling tissue sections in 10mM Tris with 1mM EDTA, pH 9.0, for 10-20 min followed by cooling at RT for 20 min
2. The prediluted format is supplied in a dropper bottle and is optimized for use in IHC. After epitope retrieval step (if required), drip mAb solution onto the tissue section and incubate at RT for 30 min.
3. View the recombinant version of this a [href=../tds/recombinant-gpc3-antibody-rgpc3-863-v3456>Glypican-3 antibody](#).



IHC:
Formalin-fixed,
paraffin-embedded
r...

Formula

0.2 mg/ml in 1X PBS with 0.1 mg/ml BSA (US sourced) and 0.05% sodium azide

Isotype

Mouse IgG1, kappa

Clonality

Monoclonal

Purity

Protein G affinity chromatography

Uniprot ID

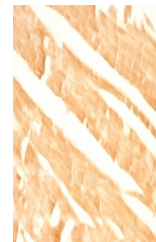
P51654

Hazard Information

This Glypican-3 antibody is available for research use only.

Dilution Range

Flow cytometry: 1-2ug/million cells,Immunofluorescence: 1-2ug/ml,Immunohistochemistry (FFPE): 0.5-1ug/ml for 30 min at RT



IHC:
Formalin-fixed,
paraffin-embedded
r...

Expiration Date

12 months from date of receipt.