
Product Datasheet

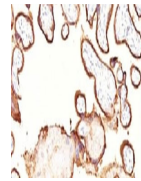
Placental Alkaline Phosphatase Antibody / ALPP (orb749508)

Description

Reacts with a 70kDa membrane-bound isozyme


Species/Host Mouse

Phosphatase ...

Reactivity Human

Conjugation Unconjugated

Tested Applications IHC-P

 IHC:
Formalin-fixed,
paraffin-embedded
h...

Immunogen Recombinant human PLAP protein was used as the immunogen for the Placental Alkaline Phosphatase antibody.

Preservatives 0.2 mg/ml in 1X PBS with 0.1 mg/ml rAlbumin (US sourced) and 0.05% sodium azide

Storage Store the Placental Alkaline Phosphatase antibody at 2-8°C (with azide) or aliquot and store at -20°C or colder (without azide).

Note For research use only

Application notes Optimal dilution of the Placental Alkaline Phosphatase antibody should be determined by the researcher.1. No special pretreatment is required for the immunohistochemical staining of formalin-fixed tissues.2. The prediluted format is supplied in a dropper bottle and is optimized for use in IHC. After epitope retrieval step (if required), drip mAb solution onto the tissue section and incubate at RT for 30 min.

Formula 0.2 mg/ml in 1X PBS with 0.1 mg/ml BSA (US sourced) and 0.05% sodium azide

Isotype Mouse IgG2b, kappa

Clonality Monoclonal

Purity Protein G affinity chromatography

Uniprot ID **P05187**
Hazard Information This Placental Alkaline Phosphatase antibody is available for research use only.

Dilution Range Immunohistochemistry (FFPE): 0.25-0.5ug/ml for 30 min at RT

Expiration Date 12 months from date of receipt.