
Product Datasheet

Placental Alkaline Phosphatase Antibody / ALPP (orb749506)

Description

PLAP is a tissue specific, trophoblast-derived,

anchored,...

Species/Host

Mouse

Reactivity

Human

Conjugation

Unconjugated

Tested Applications

ELISA

Immunogen

Recombinant full-length human ALPP protein was used as the immunogen for the Placental Alkaline Phosphatase antibody.

Preservatives

0.2 mg/ml in 1X PBS with 0.1 mg/ml rAlbumin (US sourced) and 0.05% sodium azide

Storage

Store the Placental Alkaline Phosphatase antibody at 2-8°C (with azide) or aliquot and store at -20°C or colder (without azide).

Note

For research use only

Application notes

Optimal dilution of the Placental Alkaline Phosphatase antibody should be determined by the researcher.

Formula

0.2 mg/ml in 1X PBS with 0.1 mg/ml BSA (US sourced) and 0.05% sodium azide

Isotype

Mouse IgG2a, kappa

Clonality

Monoclonal

Purity

Protein G affinity chromatography

Uniprot ID

P05187

Hazard Information

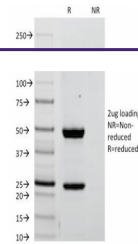
This Placental Alkaline Phosphatase antibody is available for research use only.

Dilution Range

ELISA (order BSA/sodium azide-free format for coating)

Expiration Date

12 months from date of receipt.



SDS-PAGE
Analysis of
Purified,
BSA-Free ...