

---

## Product Datasheet

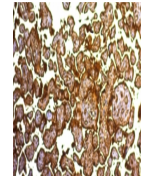
### Placental Alkaline Phosphatase Antibody / ALPP (orb749505)

**Description**

Reacts with a 70kDa membrane-bound isozyme


**Species/Host** Mouse

Phosphatase ...

**Reactivity** Human

**Conjugation** Unconjugated

**Tested Applications** IHC-P

 IHC:  
Formalin-fixed,  
paraffin-embedded  
h...

**Immunogen** Recombinant full-length human ALPP/placental alkaline phosphatase protein was used as the immunogen for the PLAP antibody.

**Preservatives** 0.2 mg/ml in 1X PBS with 0.1 mg/ml rAlbumin (US sourced) and 0.05% sodium azide

**Storage** Store the PLAP antibody at 2-8°C (with azide) or aliquot and store at -20°C or colder (without azide).

**Note** For research use only

**Application notes** Optimal dilution of the PLAP antibody should be determined by the researcher.1. No special pretreatment is required for the immunohistochemical staining of formalin-fixed tissues.2. The prediluted format is supplied in a dropper bottle and is optimized for use in IHC. After epitope retrieval step (if required), drip mAb solution onto the tissue section and incubate at RT for 30 min.

**Formula** 0.2 mg/ml in 1X PBS with 0.1 mg/ml BSA (US sourced) and 0.05% sodium azide

**Isotype** Mouse IgG2b, kappa

**Clonality** Monoclonal

**Purity** Protein G affinity chromatography

**Uniprot ID** **P05187**
**Hazard Information** This PLAP antibody is available for research use only.

**Dilution Range** Immunohistochemistry (FFPE): 1-2ug/ml for 30 min at RT

**Expiration Date** 12 months from date of receipt.