
Product Datasheet

Estrogen Receptor beta Antibody (orb749491)

Description

Estrogen receptors (ER) are members of the

ac...

Species/Host

Mouse

Reactivity

Human

Conjugation

Unconjugated

Tested Applications

FACS, IF, IHC-P, WB

Immunogen

A C-terminus fragment of recombinant human ER- β protein was used as the immunogen for the Estrogen Receptor beta antibody.

Preservatives

0.2 mg/ml in 1X PBS with 0.1 mg/ml rAlbumin (US sourced) and 0.05% sodium azide

Storage

Store the Estrogen Receptor beta antibody at 2-8°C (with azide) or aliquot and store at -20°C or colder (without azide).

Note

For research use only

Application notes

Optimal dilution of the Estrogen Receptor beta antibody should be determined by the researcher.1. The prediluted format is supplied in a dropper bottle and is optimized for use in IHC. After epitope retrieval step (if required), drip mAb solution onto the tissue section and incubate at RT for 30 min.

Formula

0.2 mg/ml in 1X PBS with 0.1 mg/ml BSA (US sourced) and 0.05% sodium azide

Isotype

Mouse IgG2a, kappa

Clonality

Monoclonal

Purity

Protein G affinity chromatography

Uniprot ID

[Q92731](#)

Hazard Information

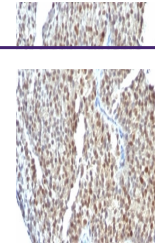
This Estrogen Receptor beta antibody is available for research use only.

Dilution Range

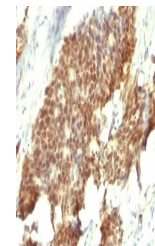
Flow cytometry: 1-2ug/million cells, Immunofluorescence: 1-2ug/ml, Western blot: 1-2ug/ml, Immunohistochemistry (FFPE): 1-2ug/ml for 30 min at RT

Expiration Date

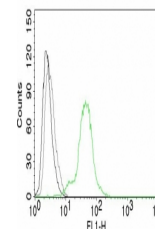
12 months from date of receipt.



IHC:
Formalin-fixed,
paraffin-embedded
h...



IHC:
Formalin-fixed,
paraffin-embedded
h...



Flow
cytometry
testing of
BT474 cells.
B...