

---

## Product Datasheet

### Secretory Component p85 Antibody / ECM1 (orb749486)

**Description**

This mAb reacts with a reduction-resistant epitope



**Species/Host** Com...

**Species/Host** Mouse

**Reactivity** Human

**Conjugation** Unconjugated

**Tested Applications** IHC-P

**Immunogen** Recombinant human protein was used as the immunogen for the recombinant Secretory Component Glycoprotein antibody.

**Preservatives** 0.2 mg/ml in 1X PBS with 0.1 mg/ml rAlbumin (US sourced) and 0.05% sodium azide

**Storage** Store the recombinant Secretory Component Glycoprotein antibody at 2-8°C (with azide) or aliquot and store at -20°C or colder (without azide).

**Note** For research use only

**Application notes** Optimal dilution of the recombinant Secretory Component Glycoprotein antibody should be determined by the researcher. 1. Staining of formalin-fixed tissues requires boiling tissue sections in pH 9 10mM Tris with 1mM EDTA for 10-20 min followed by cooling at RT for 20 min. 2. The prediluted format is supplied in a dropper bottle and is optimized for use in IHC. After epitope retrieval step (if required), drip mAb solution onto the tissue section and incubate at RT for 30 min.

**Formula** 0.2 mg/ml in 1X PBS with 0.1 mg/ml BSA (US sourced) and 0.05% sodium azide

**Isotype** Mouse IgG1, kappa

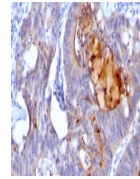
**Clonality** Recombinant

**Purity** Protein G affinity chromatography

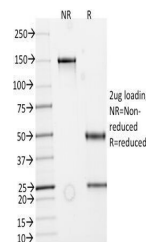
**Uniprot ID** [Q16610](#)

**Hazard Information** This recombinant Secretory Component Glycoprotein antibody is available for research use only.

**Dilution Range** Immunohistochemistry (FFPE): 1-2ug/ml for 30 min at RT (1), Prediluted IHC only format: incubate for 30 min at RT (2)



IHC:  
Formalin-fixed,  
paraffin-embedded  
h...



SDS-PAGE  
Analysis of  
Purified,  
BSA-Free ...