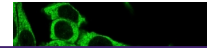

Product Datasheet

CCR5 Antibody (orb749468)

Description

Reacts with the N-terminal extracellular domain of


Species/Host

Mouse

Reactivity

Human

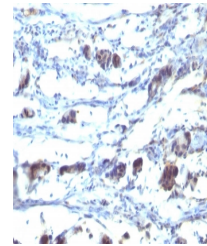
Conjugation

Unconjugated

Tested Applications

FACS, IF, IHC-Fr, IHC-P

Immunofluorescent staining of PFA-fixed ...



IHC staining of FFPE human stomach with ...

Immunogen

Human native protein was used as the immunogen for the CCR5 antibody.

Preservatives

0.2 mg/ml in 1X PBS with 0.1 mg/ml rAlbumin (US sourced) and 0.05% sodium azide

Storage

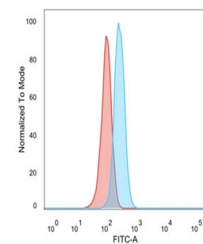
Store the CCR5 antibody at 2-8°C (with azide) or aliquot and store at -20°C or colder (without azide).

Note

For research use only

Application notes

Optimal dilution of the CCR5 antibody should be determined by the researcher.1. The prediluted format is supplied in a dropper bottle and is optimized for use in IHC. After epitope retrieval step (if required), drip mAb solution onto the tissue section and incubate at RT for 30 min.



Flow cytometry testing of PFA-fixed huma...

Formula

0.2 mg/ml in 1X PBS with 0.1 mg/ml BSA (US sourced) and 0.05% sodium azide

Isotype

Mouse IgG2a, kappa

Clonality

Monoclonal

Purity

Protein G affinity chromatography

Uniprot ID
P51681
Hazard Information

This CCR5 antibody is available for research use only.

Dilution Range

Immunohistochemistry (Frozen): 1-2ug/ml for 30 min at RT, Immunohistochemistry (FFPE): 1-2ug/ml for 30 min at RT, Flow cytometry: 1-2ug/million cells, Immunofluorescence: 1-2ug/ml

Expiration Date

12 months from date of receipt.