
Product Datasheet

TOP1MT Antibody / Topoisomerase I mitochondrial (orb749467)

Description

DNA topoisomerases are nuclear enzymes that

eukaryotic ...

Species/Host

Mouse

Reactivity

Human

Conjugation

Unconjugated

Tested Applications

FACS, IF, IHC-P, WB

Immunogen

Recombinant full-length human protein was used as the immunogen for the TOP1MT antibody.

Preservatives

0.2 mg/ml in 1X PBS with 0.1 mg/ml rAlbumin (US sourced) and 0.05% sodium azide

Storage

Store the TOP1MT antibody at 2-8°C (with azide) or aliquot and store at -20°C or colder (without azide).

Note

For research use only

Application notes

Optimal dilution of the TOP1MT antibody should be determined by the researcher.1. Staining of formalin/paraffin tissues requires boiling tissue sections in pH 9 10mM Tris with 1mM EDTA for 10-20 min followed by cooling at RT for 20 min.2. The prediluted format is supplied in a dropper bottle and is optimized for use in IHC. After epitope retrieval step (if required), drip mAb solution onto the tissue section and incubate at RT for 30 min.

Formula

0.2 mg/ml in 1X PBS with 0.1 mg/ml BSA (US sourced) and 0.05% sodium azide

Isotype

Mouse IgG2b, kappa

Clonality

Monoclonal

Purity

Protein G affinity chromatography

Uniprot ID

[Q969P6](#)

Hazard Information

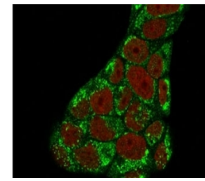
This TOP1MT antibody is available for research use only.

Dilution Range

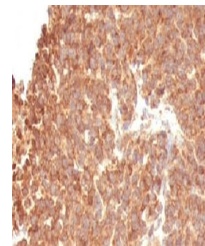
Flow cytometry: 1-2ug/million cells,Western blot: 1-2ug/ml,Immunofluorescence: 1-2ug/ml,Immunohistochemistry (FFPE): 1-2ug/ml for 30 min at RT (1) (2)

Expiration Date

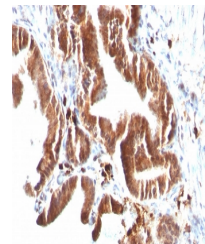
12 months from date of receipt.



Immunofluorescent staining of PFA-fixed ...



IHC: Formalin-fixed, paraffin-embedded h...



IHC: Formalin-fixed, paraffin-embedded h...