

---

## Product Datasheet

### Cadherin 16 Antibody (orb749439)

**Description**

This mAb recognizes a protein of 130kDa, identified as


**Species/Host**

Mouse

**Reactivity**

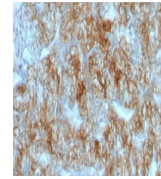
Human, Mouse, Rat

**Conjugation**

Unconjugated

**Tested Applications**

ELISA, FACS, IF, IHC-P, WB



IHC testing of FFPE human renal cell carcinoma...

**Immunogen**

Recombinant human protein was used as the immunogen for the Cadherin 16 antibody.

**Preservatives**

0.2 mg/ml in 1X PBS with 0.1 mg/ml rAlbumin (US sourced) and 0.05% sodium azide

**Storage**

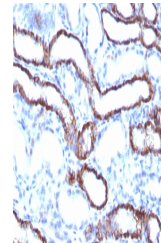
Store the Cadherin 16 antibody at 2-8°C (with azide) or aliquot and store at -20°C or colder (without azide).

**Note**

For research use only

**Application notes**

Optimal dilution of the Cadherin 16 antibody to be determined by the researcher.1. The prediluted format is supplied in a dropper bottle and is optimized for use in IHC. After epitope retrieval step (if required), drip mAb solution onto the tissue section and incubate at RT for 30 min.



IHC testing of FFPE rat kidney with Cadherin 16 antibody...

**Formula**

0.2 mg/ml in 1X PBS with 0.1 mg/ml BSA (US sourced) and 0.05% sodium azide

**Isotype**

Mouse IgG1, kappa

**Clonality**

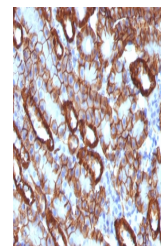
Monoclonal

**Purity**

Protein G affinity chromatography

**Uniprot ID**

**075309**



IHC testing of FFPE mouse kidney with Cadherin 16 antibody...

**Hazard Information**

This Cadherin 16 antibody is available for research use only.

**Dilution Range**

ELISA: 2-4ug/ml (order BSA/azide-free format),Immunofluorescence: 1-2ug/ml,Flow cytometry: 1-2ug/million cells,Western blot: 1-2ug/ml,Immunohistochemistry (FFPE): 1-2ug/ml for 30 min at RT

**Expiration Date**

12 months from date of receipt.