

---

## Product Datasheet

### TAG-72 Antibody (orb749424)

**Description**

This antibody recognizes an oncofetal antigen of 220kDa,


**Species/Host**

Mouse

**Reactivity**

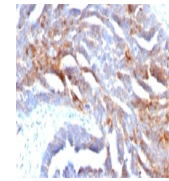
Human

**Conjugation**

Unconjugated

**Tested Applications**

FACS, IF, IHC-P



IHC staining of human ovarian carcinoma ...

**Immunogen**

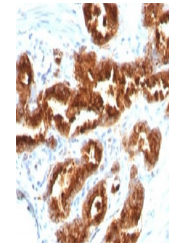
The membrane-enriched fraction of a human breast carcinoma liver metastasis was used as the immunogen for this TAG-72 antibody.

**Preservatives**

0.2 mg/ml in 1X PBS with 0.1 mg/ml rAlbumin (US sourced) and 0.05% sodium azide

**Storage**

Store the TAG-72 antibody at 2-8°C (with azide) or aliquot and store at -20°C or colder (without azide).



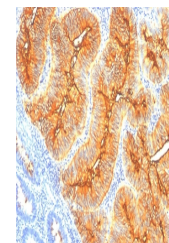
IHC staining of FFPE human prostate carc...

**Note**

For research use only

**Application notes**

The concentration stated for each application is a general starting point. Variations in protocols, secondaries and substrates may require the TAG-72 antibody to be titrated up or down for optimal performance.1. HIER: boil tissue sections in pH 9 10mM Tris with 1mM EDTA for 10-20 min followed by cooling at RT for 20 min.2. The prediluted format is supplied in a dropper bottle and is optimized for use in IHC. After epitope retrieval step (if required), drip mAb solution onto the tissue section and incubate at RT for 30 min.



IHC staining of FFPE human colon carcino...

**Formula**

0.2 mg/ml in 1X PBS with 0.1 mg/ml BSA (US sourced) and 0.05% sodium azide

**Isotype**

Mouse IgG1, kappa

**Clonality**

Monoclonal

**Purity**

Protein G affinity chromatography

**Hazard Information**

This TAG-72 antibody is available for research use only.

**Entrez**

**182875**

**Dilution Range**

Flow cytometry: 0.5-1ug/million cells,Immunofluorescence: 1-2ug/ml,Immunohistochemistry (FFPE): 0.5-1ug/ml for 30 min at RT

**Expiration Date**

12 months from date of receipt.