
Product Datasheet

Bromodeoxyuridine / BrdU Antibody (orb749407)

Description

This antibody reacts with Bromodeoxyuridine (BrdU)

Species/Host

Mouse

Reactivity

All

Conjugation

Unconjugated

Tested Applications

IHC-P

Immunogen

BrdU / Bromodeoxyuridine conjugated to KLH was used as the immunogen for this antibody.

Preservatives

0.2 mg/ml in 1X PBS with 0.1 mg/ml rAlbumin (US sourced) and 0.05% sodium azide

Storage

Store the BrdU antibody at 2-8°C (with azide) or aliquot and store at -20°C or colder (without azide).

Note

For research use only

Application notes

The concentration stated for each application is a general starting point. Variations in protocols, secondaries and substrates may require the Bromodeoxyuridine / BrdU antibody to be titrated up or down for optimal performance.1. For staining of formalin-fixed tissues, incubate sections in 4N HCl for 30 minutes at RT followed by digestion with trypsin at 1mg/ml PBS, 10 min at 37°C.2. The prediluted format is supplied in a dropper bottle and is optimized for use in IHC. After epitope retrieval step (if required), drip mAb solution onto the tissue section and incubate at RT for 30 min.

Formula

0.2 mg/ml in 1X PBS with 0.1 mg/ml BSA (US sourced) and 0.05% sodium azide

Isotype

Mouse IgG1, kappa

Clonality

Monoclonal

Purity

Protein G affinity chromatography

Hazard Information

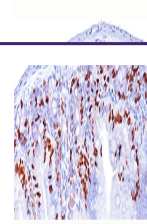
This BrdU / Bromodeoxyuridine antibody is available for research use only.

Dilution Range

Immunohistochemistry (FFPE): 0.5-1ug/ml for 30 min at RT

Expiration Date

12 months from date of receipt.



IHC staining of mouse intestine tissue (...)