

Product Datasheet

Bromodeoxyuridine / BrdU Antibody (orb749405)

Description

It reacts with Bromodeoxyuridine (BrdU) in single


Species/Host

Mouse

Reactivity

All

Conjugation

Unconjugated

Tested Applications

IHC-P

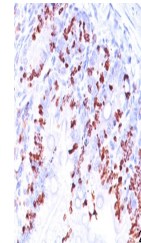
IHC staining of mouse intestine tissue (...)

Immunogen

Bromodeoxyuridine conjugated to KLH was used as the immunogen.

Preservatives

0.2 mg/ml in 1X PBS with 0.1 mg/ml rAlbumin (US sourced) and 0.05% sodium azide


Storage

Store the BrdU antibody at 2-8°C (with azide) or aliquot and store at -20°C or colder (without azide).

Note

For research use only

Application notes

The concentration stated for each application is a general starting point. Variations in protocols, secondaries and substrates may require the Bromodeoxyuridine antibody to be titrated up or down for optimal performance.1. For staining of formalin-fixed tissues, incubate sections in 4N HCl for 30 minutes at RT followed by digestion with trypsin at 1mg/ml PBS, 10 min at 37oC.

IHC staining of mouse intestine tissue (...)

Formula

0.2 mg/ml in 1X PBS with 0.1 mg/ml BSA (US sourced) and 0.05% sodium azide

Isotype

Mouse IgG1, kappa

Clonality

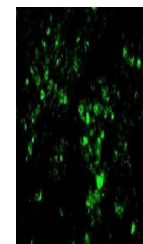
Monoclonal

Purity

Protein G affinity chromatography

Hazard Information

This BrdU antibody is available for research use only.



IHC/IF testing of FFPE rat kidney with A...

Dilution Range

Immunohistochemistry (FFPE): 0.5-1ug/ml for 30 min at RT

Expiration Date

12 months from date of receipt.