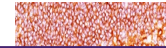


## Product Datasheet

### MALT1 Antibody (orb749401)

**Description**

Mucosa associated lymphoid tissue lymphoma translocation


**Species/Host**

Mouse

**Reactivity**

Human

**Conjugation**

Unconjugated

**Tested Applications**

IHC-P, WB

**Immunogen**

A recombinant fragment (aa 701-808) was used as the immunogen for this antibody.

**Preservatives**

0.2 mg/ml in 1X PBS with 0.1 mg/ml rAlbumin (US sourced) and 0.05% sodium azide

**Storage**

Store the MALT1 antibody at 2-8°C (with azide) or aliquot and store at -20°C or colder (without azide).

**Note**

For research use only

**Application notes**

The concentration stated for each application is a general starting point. Variations in protocols, secondaries and substrates may require the antibody to be titrated up or down for optimal performance. 1. Staining of formalin-fixed tissues requires boiling tissue sections in pH 9 10mM Tris with 1mM EDTA for 10-20 min followed by cooling at RT for 20 minutes. 2. The prediluted format is supplied in a dropper bottle and is optimized for use in IHC. After epitope retrieval step (if required), drip mAb solution onto the tissue section and incubate at RT for 30 min.

**Formula**

0.2 mg/ml in 1X PBS with 0.1 mg/ml BSA (US sourced) and 0.05% sodium azide

**Isotype**

Mouse IgG1, kappa

**Clonality**

Monoclonal

**Purity**

Protein G purified monoclonal antibody

**Hazard Information**

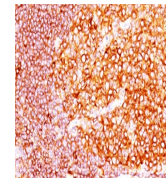
This MALT1 antibody is available for research use only.

**Entrez**
[10892](#)
**Dilution Range**

Western blot: 1-2ug/ml, Immunohistochemistry (FFPE): 1-2ug/ml for 30 min at RT (1) (2)

**Expiration Date**

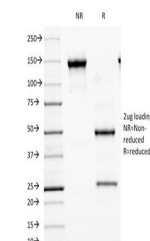
12 months from date of receipt.



IHC staining of FFPE human tonsil tissue...



Western blot analysis of Daudi lysate an...



SDS-PAGE Analysis of Purified, BSA-Free ...