
Product Datasheet

Bcl10 Antibody (orb749400)

Description

Bcl10, with an N-terminal caspase recruitment domain


Species/Host

Mouse

Reactivity

Human

Conjugation

Unconjugated

Tested Applications

FACS, IHC-P, WB

Immunogen

Human Bcl10 recombinant protein (epitope localized to amino acids 122-168) was used as the immunogen for this antibody.

Preservatives

0.2 mg/ml in 1X PBS with 0.1 mg/ml rAlbumin (US sourced) and 0.05% sodium azide

Storage

Store the Bcl10 antibody at 2-8°C (with azide) or aliquot and store at -20°C or colder (without azide).

Note

For research use only

Application notes

The concentration stated for each application is a general starting point. Variations in protocols, secondaries and substrates may require the Bcl10 antibody to be titrated up or down for optimal performance. 1. Staining of formalin-fixed tissues requires boiling tissue sections in pH 9 10mM Tris with 1mM EDTA for 10-20 min followed by cooling at RT for 20 minutes. 2. The prediluted format is supplied in a dropper bottle and is optimized for use in IHC. After epitope retrieval step (if required), drip mAb solution onto the tissue section and incubate at RT for 30 min.

Formula

0.2 mg/ml in 1X PBS with 0.1 mg/ml BSA (US sourced) and 0.05% sodium azide

Isotype

Mouse IgG1, kappa

Clonality

Monoclonal

Purity

Protein G affinity chromatography

Hazard Information

This Bcl10 antibody is available for research use only.

Entrez

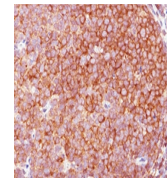
8915

Dilution Range

Flow cytometry: 1-2ug/million cells, Western blot: 1-2ug/ml, Immunohistochemistry (FFPE): 1-2ug/ml for 30 min at RT (1) (2)

Expiration Date

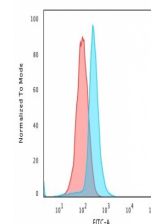
12 months from date of receipt.



IHC staining of FFPE human tonsil with B...



Western blot testing of HepG2 lysate with...



Flow cytometry testing of PFA-fixed huma...