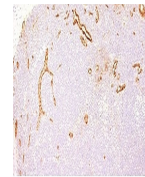

Product Datasheet

von Willebrand Factor Antibody / vWF (orb749397)

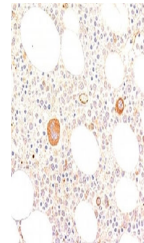
Description

von Willebrand Factor (vWF) is a glycoprotein

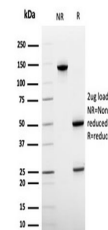
| | |
|----------------------------|--|
| | li... |
| Species/Host | Mouse |
| Reactivity | Human |
| Conjugation | Unconjugated |
| Tested Applications | IHC-P |
| Immunogen | A recombinant human protein fragment was used as the immunogen for this von Willebrand Factor antibody. |
| Preservatives | 0.2 mg/ml in 1X PBS with 0.1 mg/ml rAlbumin (US sourced) and 0.05% sodium azide |
| Storage | Store the von Willebrand Factor antibody at 2-8°C (with azide) or aliquot and store at -20°C or colder (without azide). |
| Note | For research use only |
| Application notes | Variations in protocols, secondaries and substrates may require the von Willebrand Factor antibody to be titered for optimal performance.1. FFPE staining requires boiling tissue sections in pH 9 10mM Tris with 1mM EDTA for 10-20 min followed by cooling at RT for 20 minutes. |
| Formula | 0.2 mg/ml in 1X PBS with 0.1 mg/ml BSA (US sourced) and 0.05% sodium azide |
| Isotype | Mouse IgG1, kappa |
| Clonality | Monoclonal |
| Purity | Protein G purified von Willebrand Factor antibody |
| Hazard Information | This von Willebrand Factor antibody is available for research use only. |
| Entrez | 7450 |
| Dilution Range | Immunohistochemistry (FFPE): 1-2ug/ml for 30 min at RT |
| Expiration Date | 12 months from date of receipt. |



IHC staining of human tonsil with von Wi...



IHC staining of human bone marrow with V...



SDS-PAGE analysis of purified, BSA-free ...