

---

## Product Datasheet

**p53 Antibody / TP53 (N-Terminal Region)  
(orb749392)**

**Description**

This antibody is specific for a 53kDa protein, which is


**Species/Host**

Mouse

**Reactivity**

Human

**Conjugation**

Unconjugated

**Tested Applications**

IHC-P, WB

IHC staining of FFPE normal human colon

**Immunogen**

Recombinant human wild type p53 expressed in E. coli was used as the immunogen for this antibody. Its epitope maps within the N-terminus portion (aa 20-25) of the p53 oncoprotein.

...

**Preservatives**

0.2 mg/ml in 1X PBS with 0.1 mg/ml rAlbumin (US sourced) and 0.05% sodium azide

**Storage**

Store the p53 antibody at 2-8°C (with azide) or aliquot and store at -20°C or colder (without azide).

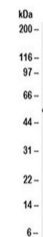
**Note**

For research use only

**Application notes**

The concentration stated for each application is a general starting point. Variations in protocols, secondaries and substrates may require the p53 antibody to be titered up or down for optimal performance.1. Staining of formalin-fixed tissues requires boiling tissue sections in 10mM citrate buffer, pH 6.0, for 10-20 min followed by cooling at RT for 20 minutes.2. The prediluted format is supplied in a dropper bottle and is optimized for use in IHC. After epitope retrieval step (if required), drip mAb solution onto the tissue section and incubate at RT for 30 min.

Western blot testing of 293 cell lysate ...


**Formula**

0.2 mg/ml in 1X PBS with 0.1 mg/ml BSA (US sourced) and 0.05% sodium azide

**Isotype**

Mouse IgG2b, kappa

**Clonality**

Monoclonal

**Purity**

Protein G affinity chromatography

**Hazard Information**

This p53 antibody is available for research use only.

**Entrez**

**7157**

**Dilution Range**

Western blot: 0.5-1.0ug/ml, Immunohistochemistry (FFPE): 0.5-1.0ug/ml for 30 min at RT (1), Prediluted IHC only format: incubate for 30 min at RT (2)

**Expiration Date**

12 months from date of receipt.