
Product Datasheet

EpCAM Antibody (orb749368)

Description

Epithelial cellular adhesion molecule (EpCAM), is also


Species/Host

Mouse

Reactivity

Human

Conjugation

Unconjugated

Tested Applications

FACS, IF, IHC-P

Immunogen

Small cell lung carcinoma cells were used as the immunogen for this EpCAM antibody VU-1D9.

Preservatives

0.2 mg/ml in 1X PBS with 0.1 mg/ml rAlbumin (US sourced) and 0.05% sodium azide

Storage

Store the EpCAM antibody at 2-8°C (with azide) or aliquot and store at -20°C or colder (without azide).

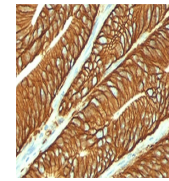
Note

For research use only

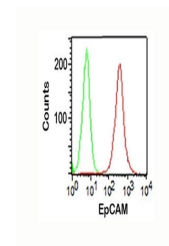
Application notes

The concentration stated for each application is a general starting point. Variations in protocols, secondaries and substrates may require the EpCAM antibody to be titrated up or down for optimal performance.

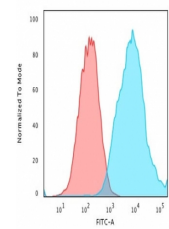
1. Staining of formalin/paraffin tissues REQUIRES digestion of tissue sections with pepsin at 1mg/ml Tris-HCl, pH 2.0 for 15 min at RT or 10 min at 37°C.
2. The prediluted format is supplied in a dropper bottle and is optimized for use in IHC. After epitope retrieval step (if required), drip mAb solution onto the tissue section and incubate at RT for 30 min.
3. View the recombinant version of this a href=../tds/recombinant-ep-cam-antibody-rvu-1d9-v3465>EpCAM antibody.



IHC testing of FFPE colon carcinoma stai...



FACS staining (surface) of HT29 cells us...



Flow cytometry testing of PFA-fixed huma...

Formula

0.2 mg/ml in 1X PBS with 0.1 mg/ml BSA (US sourced) and 0.05% sodium azide

Isotype

Mouse IgG1, kappa

Clonality

Monoclonal

Purity

Protein G affinity chromatography

Hazard Information

This EpCAM antibody is available for research use only.

Entrez

[4072](#)

Dilution Range

Flow cytometry: 0.5-1ug/million cells, Immunofluorescence: 1-2ug/ml, Immunohistochemistry (FFPE): 0.5-1ug/ml for 30 min at RT