

---

## Product Datasheet

### CD68 Antibody (orb749341)

**Description**

This antibody recognizes a glycoprotein of 110kDa, which


**Species/Host**

Mouse

**Reactivity**

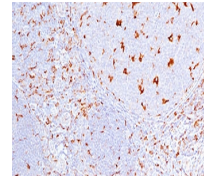
Feline, Human, Mouse, Rat

**Conjugation**

Unconjugated

**Tested Applications**

FACS, IF, IHC-P, WB



IHC testing of human tonsil (10X) stained...

**Immunogen**

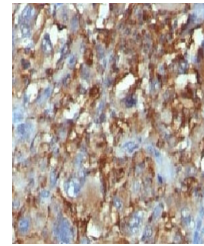
The subcellular fraction of human alveolar macrophages was used as the immunogen for this CD68 antibody.

**Preservatives**

0.2 mg/ml in 1X PBS with 0.1 mg/ml rAlbumin (US sourced) and 0.05% sodium azide

**Storage**

Store the CD68 antibody at 2-8°C (with azide) or aliquot and store at -20°C or colder (without azide).



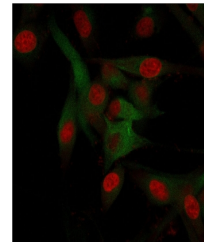
Formalin-fixed, paraffin-embedded human ...

**Note**

For research use only

**Application notes**

The concentration stated for each application is a general starting point. Variations in protocols, secondaries and substrates may require the antibody to be titrated up or down for optimal performance.1. Staining of formalin-fixed tissues is enhanced by boiling tissue sections in 10mM Citrate Buffer, pH 6.0, for 10-20 min followed by cooling at RT for 20 minutes.2. The prediluted format is supplied in a dropper bottle and is optimized for use in IHC. After epitope retrieval step (if required), drip mAb solution onto the tissue section and incubate at RT for 30 min.



Immunofluorescent staining of fixed huma...

**Formula**

0.2 mg/ml in 1X PBS with 0.1 mg/ml BSA (US sourced) and 0.05% sodium azide

**Isotype**

Mouse IgG1, kappa

**Clonality**

Monoclonal

**Purity**

Protein G affinity chromatography

**Hazard Information**

This CD68 antibody is available for research use only.

**Entrez**

**968**

**Dilution Range**

Western blot: 1-2ug/ml, Immunofluorescence: 1-2ug/ml, Flow cytometry: 1-2ug/million cells, Immunohistochemistry (FFPE): 0.5-1ug/ml for 30 min at RT

**Expiration Date**

12 months from date of receipt.