

---

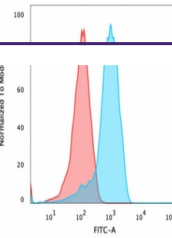
## Product Datasheet

**CD47 Antibody / IAP / Integrin Associated Protein  
(orb749334)**

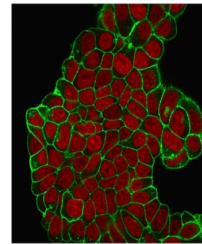
**Description**

This antibody reacts with the Ig domain of CD47

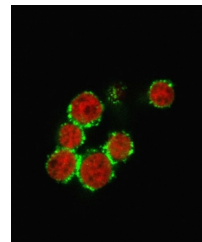
<b>Species/Host</b>	Mouse
<b>Reactivity</b>	Human
<b>Conjugation</b>	Unconjugated
<b>Tested Applications</b>	FACS, IF, WB
<b>Immunogen</b>	Intact CD47 purified from placenta was used as the immunogen for this antibody.
<b>Preservatives</b>	0.2 mg/ml in 1X PBS with 0.1 mg/ml rAlbumin (US sourced) and 0.05% sodium azide
<b>Storage</b>	Store the CD47 antibody at 2-8°C (with azide) or aliquot and store at -20°C or colder (without azide).
<b>Note</b>	For research use only
<b>Application notes</b>	The concentration stated for each application is a general starting point. Variations in protocols, secondaries and substrates may require the antibody to be titered up or down for optimal performance.
<b>Formula</b>	0.2 mg/ml in 1X PBS with 0.1 mg/ml BSA (US sourced) and 0.05% sodium azide
<b>Isotype</b>	Mouse IgG1, kappa
<b>Clonality</b>	Monoclonal
<b>Purity</b>	Protein G affinity chromatography
<b>Hazard Information</b>	This CD47 antibody is available for research use only.
<b>Entrez</b>	<a href="#">961</a>
<b>Dilution Range</b>	Western blot: 1-2ug/ml, Flow cytometry: 1-2ug/million cells, Immunofluorescence: 1-2ug/ml
<b>Expiration Date</b>	12 months from date of receipt.



Flow cytometry testing of PFA-fixed huma...



Immunofluorescent staining of PFA-fixed ...



Immunofluorescent staining of PFA-fixed ...