
Product Datasheet

CD6 Antibody (orb749315)

Description

CD6 is a type I transmembrane glycoprotein that contains


Species/Host

Mouse

Reactivity

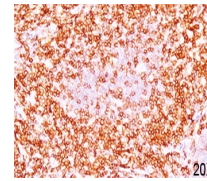
Human

Conjugation

Unconjugated

Tested Applications

IF, IHC-P



IHC testing of human tonsil (10X) stained...

Immunogen

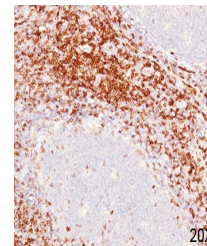
Human recombinant CD6 protein was used as the immunogen for this antibody.

Preservatives

0.2 mg/ml in 1X PBS with 0.1 mg/ml rAlbumin (US sourced) and 0.05% sodium azide

Storage

Store the CD6 antibody at 2-8°C (with azide) or aliquot and store at -20°C or colder (without azide).



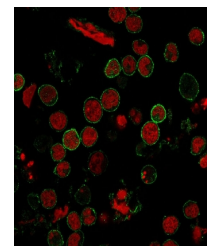
IHC testing of human tonsil (20X) stained...

Note

For research use only

Application notes

The concentration stated for each application is a general starting point. Variations in protocols, secondaries and substrates may require the antibody to be titrated up or down for optimal performance. 1. Staining of formalin-fixed tissues requires boiling tissue sections in 10mM Citrate Buffer, pH 6.0, for 10-20 min followed by cooling at RT for 20 minutes. 2. The prediluted format is supplied in a dropper bottle and is optimized for use in IHC. After epitope retrieval step (if required), drip mAb solution onto the tissue section and incubate at RT for 30 min.



Immunofluorescent staining of human MOLT...

Formula

0.2 mg/ml in 1X PBS with 0.1 mg/ml BSA (US sourced) and 0.05% sodium azide

Isotype

Mouse IgG1, kappa

Clonality

Monoclonal

Purity

Protein G affinity chromatography

Hazard Information

This CD6 antibody is available for research use only.

Entrez

[923](#)

Dilution Range

Immunofluorescence: 1-2ug/ml, Immunohistochemistry (FFPE): 1-2ug/ml for 30 min at RT

Expiration Date

12 months from date of receipt.